

## OK Oil & Gas Sector Extends Post-Covid Rebound

*The state's oil and gas sector continues along a steady but subdued recovery path in the post-Covid period. Hiring gains remain modest but household income from the industry has strengthened. Production growth has resumed, with production value bolstered by high energy prices. Gross production taxes are at record levels, but the rebound in drilling is limited by a cautious investment outlook.*



### Summary of Current Conditions and Outlook

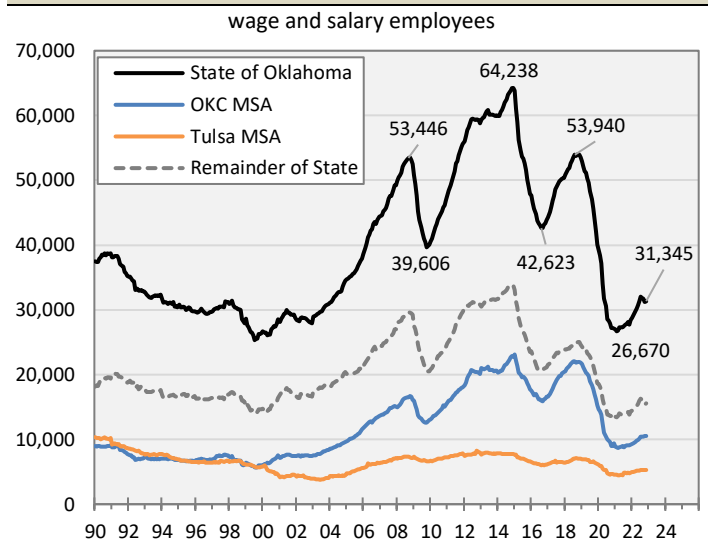
- Oklahoma's oil and gas industry continues to expand, but firms remain cautious in the post-pandemic period.
- Oil and gas wage and salary hiring in the state has rebounded at a moderate pace since early 2021, adding 4,700 new jobs. The ranks of self-employed oil and gas proprietors rebounded in late 2021 and are now up 6,700. Total state oil and gas employment has increased by about 10,500 in the recovery.
- Household income gains among oil and gas workers remain strong despite subdued hiring. The largest income gains in the past four quarters are traced to self-employed proprietors.
- Oklahoma's households derived 8.6% of total state household income from the mining sector in the third quarter of 2022.
- The state experienced a far larger decline in oil and gas production relative to the nation in the pandemic. The rebound in state production also lagged nearly one year behind the national recovery.
- Buoyed by elevated oil and gas prices, the value of oil and gas production in the state reached a record \$29.5 billion in the 12 months ended September 2022.
- The boost in production value is driving strong increases in top-line revenue, household income, and state GDP.
- State GDP produced in the mining sector accelerated rapidly in the first three quarters of 2022, reaching a record annualized level of \$38.1 billion in the 2<sup>nd</sup> quarter.
- Mining GDP as a share of total state GDP averaged nearly 15% in the first three quarters of 2022.
- Slow growth in the state rig count reflects the cautious pace of growth in U.S private investment in oil and gas assets.
- The elevated value of oil and gas production is producing record state gross production tax revenue. Revenue reached \$1.98 billion in the most recent 12 months and \$1.50 billion in fiscal year 2022.
- Direct economic activity and spillover effects from the industry represent 27.1% of total statewide GDP, 16.2% of total statewide household income, and 8.6% of total statewide employment in the first three quarters of 2022.

### OK Oil and Gas Hiring Remains Subdued

Hiring in Oklahoma's oil and gas industry rebounded beginning in early 2021, roughly one full year after the onset of the pandemic. Cumulative job growth has since reached 17.5% (4,700 jobs) through the 3<sup>rd</sup> quarter of 2022, pushing total wage and salary employment in the industry back above 30,000 (**Figure 1**).

Oil and gas hiring has softened in the most recent few months as Federal Reserve tightening weighs on overall state and national economic conditions. We anticipate that oil and gas hiring will remain flat in the fourth quarter of 2022 as U.S. economic conditions soften under pressure from the Fed.

**Figure 1. OK Mining Wage & Salary Employment by Region**



Source: Bureau of Labor Statistics and RegionTrack calculations

**Metro vs. Nonmetro Areas.** Since early 2021, mining sector hiring has followed an uptrend in both the Oklahoma City and Tulsa metropolitan areas, as well as in the remainder of the state outside the two major metro areas. Measured from the recent bottom in early 2021, oil and gas hiring has rebounded 20.2% in the OKC metro area, 17.5% in the Tulsa metro area, and 15.8% in the remainder of the state. (**Figure 1**). These gains are far smaller than the hiring gains

posted in the early stages of the industry recovery in both the 2010-11 and 2016-17 periods.

The gains in the OKC and Tulsa metro areas primarily reflect increased white-collar employment while the gain outside the two major metro areas mostly reflects increased drilling and production activity.

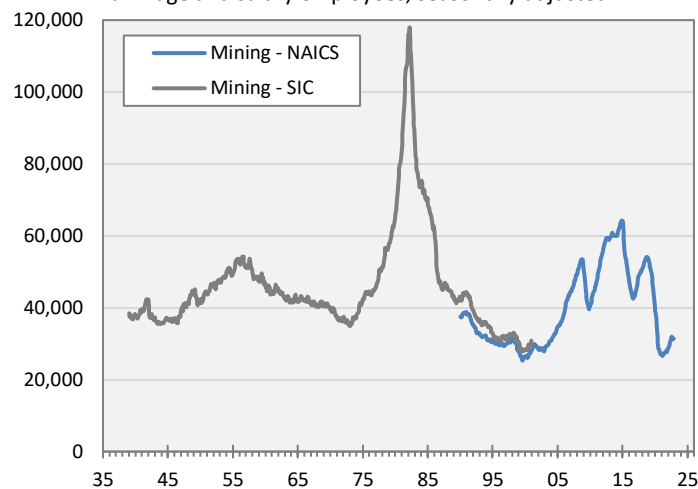
In November 2022, approximately 10,000 oil and gas wage and salary jobs were in the OKC metro area, 5,000 in the Tulsa metro area, and nearly 16,000 across the remainder of the state.

Relative to historical levels, mining sector wage and salary employment in the state remains near the lowest levels in the modern era of oil and gas production (**Figure 2**). Only in the late 1990s did mining sector wage and salary employment similarly fall below 30,000 workers.

Current statewide oil and gas hiring remains roughly half the level present at the two-decade peak of 63,000 in late 2014 and only one-fourth the all-time peak in the early 1980s. The pullback in hiring reflects both increased long-run efficiency in the use of labor and the deep restructuring in the industry that took place from late 2018 through early 2021.

**Figure 2. Oklahoma Mining Wage & Salary Employment**

all wage and salary employees, seasonally adjusted



Source: Bureau of Labor Statistics and RegionTrack calculations

Note: The mining sector is defined using NAICS codes from January 1990 forward and SIC codes prior to December 2000.

## State and U.S. Oil Patch Hiring Gains Continue

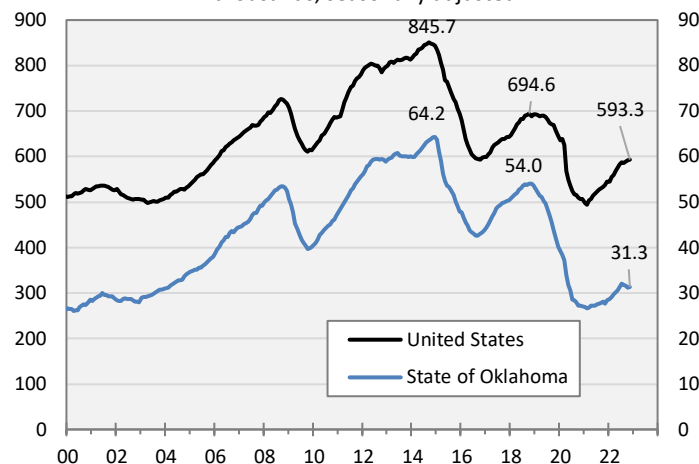
The rebound in Oklahoma oil and gas jobs is proceeding at a slower pace than U.S. oil and gas hiring in this cycle (**Figure 3**). The relative hiring weakness for the state reflects both a delayed recovery in state production and a larger pullback in state drilling activity.

The nation has recovered almost half (95,000) of the more than 200,000 oil and gas jobs lost in the hiring downturn

from late 2018 through early 2021. In comparison, the state has recovered less than 20% of losses to date.

**Figure 3. U.S. & OK Mining Wage & Salary Employment**

In thousands, seasonally adjusted



Source: Bureau of Labor Statistics and RegionTrack calculations

The state's share of national mining employment is down about two percentage points since early 2019 after peaking just below an 8% share (**Figure 4**). This follows a nearly two-decade stretch of steady share gains for the state relative to the nation from 2000 to 2019. The state's share of U.S. mining employment has now stabilized just above 5% in the past 12 months.

**Figure 4. OK Share of U.S. Mining Wage & Salary Employment**

percent share



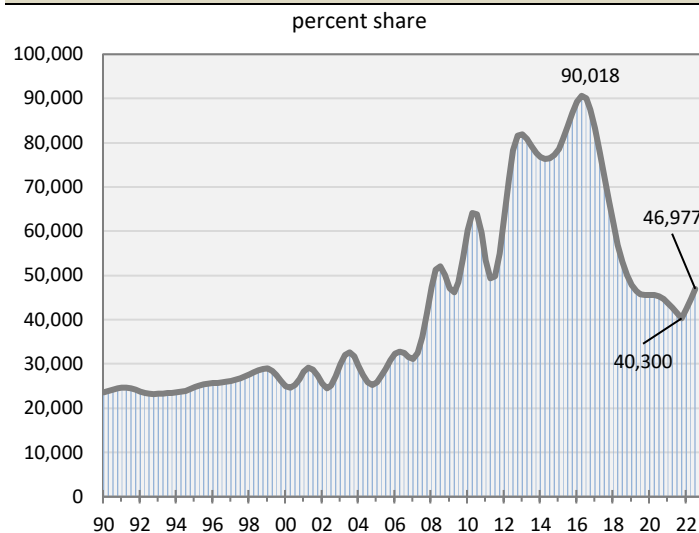
Source: Bureau of Labor Statistics and RegionTrack calculations

## Oil and Gas Proprietor Employment Rebounding

The trend in the number of self-employed persons (operating as sole proprietors or in partnerships) in the state oil and gas sector has closely followed the delayed rebound in production and drilling. The number of proprietors bottomed in the 4<sup>th</sup> quarter of 2021 at about 40,300 but has since rebounded to nearly 47,000 (16.6% gain) in the 3<sup>rd</sup> quarter of 2022 (**Figure 5**). The current level

is slightly more than half the 90,000 oil and gas proprietors operating at the recent peak in 2016.

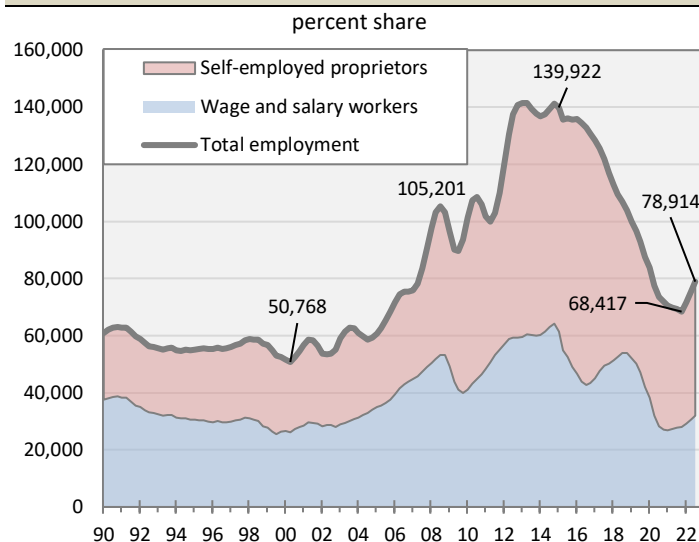
**Figure 5. Oklahoma Mining Sector Proprietor Employment**



Source: Bureau of Labor Statistics, Bureau of Economic Analysis, and RegionTrack estimates  
Note: Proprietors are self-employed persons operating as sole proprietors or in partnerships in the oil and gas sector.

Total state oil and gas employment, including both wage and salary workers and self-employed proprietors, rebounded to an estimated 78,900 in the 3<sup>rd</sup> quarter of 2022 (**Figure 6**). This is up approximately 10,500 jobs (15.3% gain) since the bottom in the 4<sup>th</sup> quarter of 2021.

**Figure 6. Oklahoma Mining Sector Total Employment**



Source: Bureau of Labor Statistics and RegionTrack calculations

## Household Income from Oil and Gas Remains Strong

Despite a subdued rebound in oil and gas hiring, **income earned by Oklahoma households from the state's oil and gas sector remains elevated**, reaching an annualized rate of \$12.8 billion in the 3<sup>rd</sup> quarter of 2022 (**Figure 7**). Household income includes compensation earned by both wage and salary workers in the industry and the earnings of

self-employed proprietors. Proprietor income includes income earned by individuals operating as a sole proprietor or through partnerships in the oil and gas sector (including income earned from royalty payments) but excludes the earnings of corporate entities.

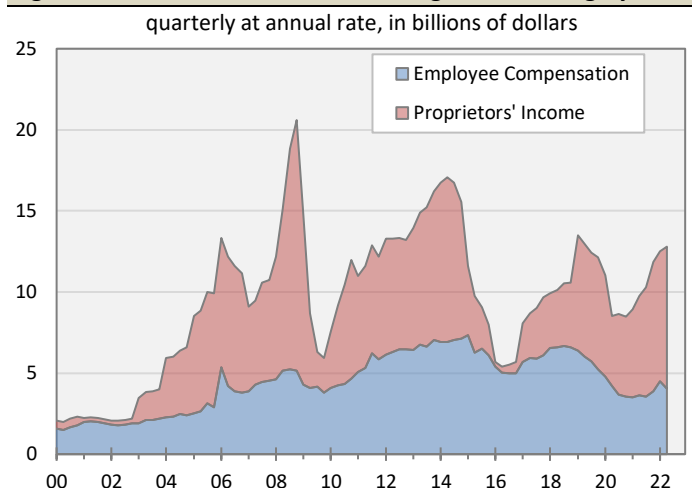
**Figure 7. Oklahoma Household Income from Mining Sector**



Source: Bureau of Economic Analysis

**Household income from oil and gas activity has increased steadily since bottoming in late 2020.** The largest gains are traced to a surge in the earnings of self-employed proprietors operating in the sector (**Figure 8**). Total oil and gas proprietor income is up 29% in the past four quarters versus an 18% increase in employee compensation. Compensation earned by oil and gas employees is typically far more stable than the earnings of the self-employed over time.

**Figure 8. Oklahoma Household Earnings from Mining by Source**



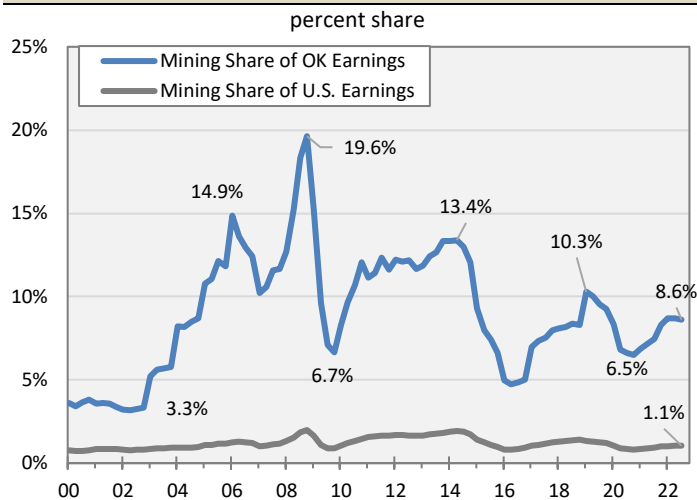
Source: Bureau of Economic Analysis

Income earned by the self-employed is currently the far larger component of household income derived from oil and gas activity. In the 3<sup>rd</sup> quarter of 2022, total household income earned by self-employed proprietors reached \$8.73

billion, more than double the \$4.15 billion in compensation earned by oil and gas wage and salary workers.

**Statewide, Oklahoma households derived 8.6% of their total income from work from the mining sector in the 3<sup>rd</sup> quarter of 2022**, up from a recent low of 6.5% in the 4<sup>th</sup> quarter of 2020 (**Figure 9**). The current share remains well below the peak shares posted the past two decades and slightly below the 9.9% average share since 2003, but well above historical lows. Oklahoma's share of statewide household income derived from oil and gas activity has also remained among the highest across all major energy producing states in recent years.

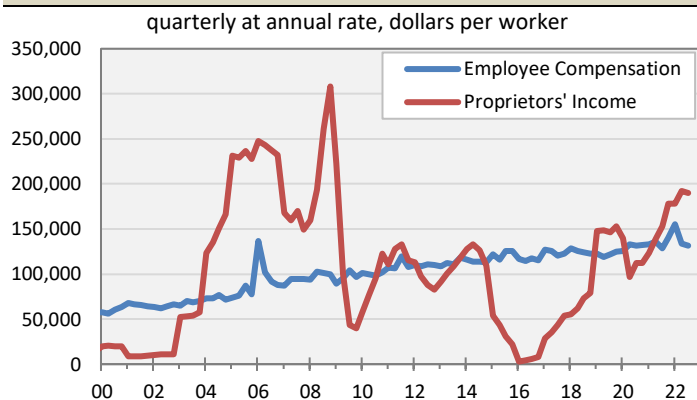
**Figure 9. Share of Household Earnings from Mining Sector**



Source: Bureau of Economic Analysis and RegionTrack calculations

The large contribution of oil and gas to total state household income is traced primarily to high average earnings per worker. In the third quarter of 2022, compensation per wage and salary worker pulled back slightly from a record high to \$131,385 (**Figure 10**). Compensation per oil and gas worker increased 2.0% over the prior four quarters.

**Figure 10. Average Earnings per Mining Sector Worker by Type**



Source: Bureau of Economic Analysis and RegionTrack calculations

Earnings per self-employed proprietor eased slightly to \$189,750 in the 3<sup>rd</sup> quarter of 2022, 24% above the level four quarters earlier.

Overall, average earnings in the oil and gas sector eased slightly to \$166,000 in the 3<sup>rd</sup> quarter of 2022, up 16% in the past four quarters.

### High Average Wages Continue in Oil and Gas Sector

**Average earnings in the oil and gas sector remain highest among all major industry sectors in the state.** In the first three quarters of 2022, annualized income per oil and gas (or Mining) worker of \$167,981. This is more than double the overall average earnings per worker of \$64,100 across all Oklahoma industry sectors in the period (**Figure 11**).

**Figure 11. OK Annual Household Income by Source & Industry**

Sector	Employee Compensation	Proprietor Income	Total Household Earnings
All Industries	\$67,523	\$53,564	\$64,100
Forestry, Fishing, and Related	46,504	8,996	28,778
Mining	140,109	186,619	167,981
Utilities	151,850	125,030	150,774
Construction	73,247	52,339	65,264
Manufacturing	83,306	67,133	82,386
Wholesale Trade	89,742	64,536	87,688
Retail Trade	43,616	23,334	39,652
Transportation & Warehousing	64,477	326,745	122,229
Information	98,466	172,479	115,420
Finance & Insurance	92,986	2,632	50,633
Real Estate, Rental, & Leasing	66,129	11,898	24,751
Professional, Scientific, & Tech.	92,074	33,082	70,197
Mgt of Companies & Enterprises	139,050	58,868	125,799
Admin., Support, & Waste Mgt.	57,669	21,686	48,017
Educational Services	53,411	12,894	43,726
Health Care & Social Assistance	71,598	59,774	70,242
Arts, Entertainment, & Recreation	42,199	34,220	39,851
Accommodation & Food Services	27,501	178,345	36,644
Other Services	49,266	29,275	41,838

Source: Bureau of Economic Analysis and RegionTrack calculations

Note: Data represent an annualized average of earnings in the first three quarters of 2022.

The other major industry sectors in Oklahoma with average earnings above \$100,000 annually are Utilities (\$150,774), Management of Companies and Enterprises (\$125,799), Transportation and Warehousing (\$122,229), and Information (\$115,420). Average annual earnings in oil and gas are more than double the level in all other major industry sectors.

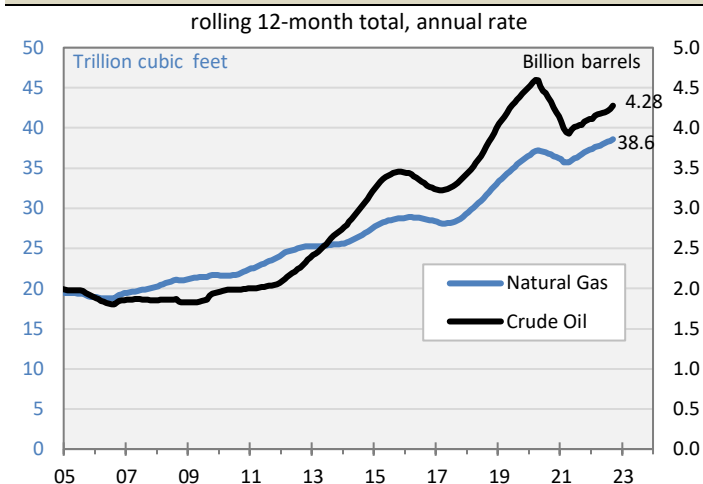
### Delayed Rebound in State Oil and Gas Output

State oil and gas production entered a steep decline following the emergence of Covid. Declines in output reached 34% for oil and 16% for natural gas on a 12-month

trailing basis. Nationally, crude output fell only 15% and natural gas output only 4%.

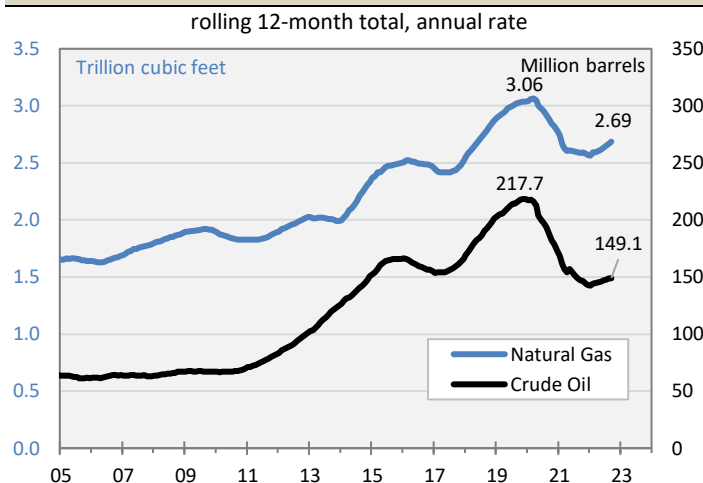
While U.S. oil and gas production (Figure 12) entered recovery in the second quarter of 2021, state production remained in a downtrend until early 2022 (Figure 13). On a trailing 12-month basis, statewide production of both crude oil and natural gas are reportedly up only about 5% from their post-pandemic lows. State natural gas production in the 12 months ended September 2022 reached 2.69 trillion cubic feet (Tcf) while oil production totaled 149.1 million barrels.

**Figure 12. U.S. Oil and Gas Production Volume**



Source: Energy Information Administration and RegionTrack calculations

**Figure 13. Oklahoma Oil and Gas Production Volume**



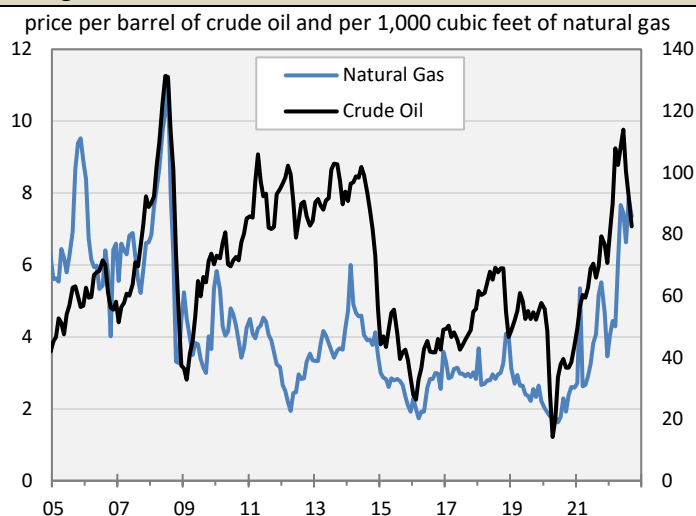
Source: Energy Information Administration and RegionTrack calculations

In contrast to the state's sluggish rebound, U.S. crude oil and natural gas production have made far more progress. More than half of lost U.S. oil production has been recovered, reaching 4.28 billion barrels in the 12 months ended September 2022. U.S. natural gas output has been even stronger, posting a record high of 38.6 Tcf in the latest 12 months.

## High Oil and Gas Prices Boosting Production Value

Elevated oil and gas prices continue to mitigate the effects of the state's delayed production rebound and subdued oil and gas hiring growth on the overall state economy (Figure 14). Year-to-date, crude oil prices in Oklahoma averaged \$97.62 per barrel and natural gas \$6.20 per Mcf. Prices softened in the second half of 2022 but remain elevated relative to averages over the past decade of \$62.46 per barrel of oil and \$3.33 per Mcf of natural gas.

**Figure 14. Price of Oklahoma Crude Oil and Natural Gas**

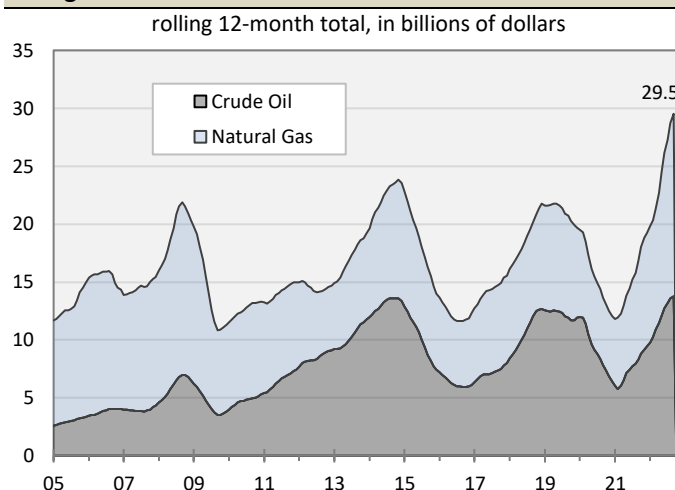


Source: NGI, Energy Information Administration, and RegionTrack calculations

Notes: First purchase price of oil in Oklahoma; price of natural gas as reported by NGI at four Oklahoma hubs.

Most importantly, high oil and gas prices are boosting the value of production of both commodities to record levels (Figure 15). Production value in the state in the 12 months ended September 2022 reached an estimated \$29.5 billion, more than double the recent low of only \$11.8 billion in January 2021 during the pandemic.

**Figure 15. Oklahoma Oil and Gas Gross Production Value**



Source: Energy Information Administration, NGI, Oklahoma Tax Commission, and RegionTrack calculations



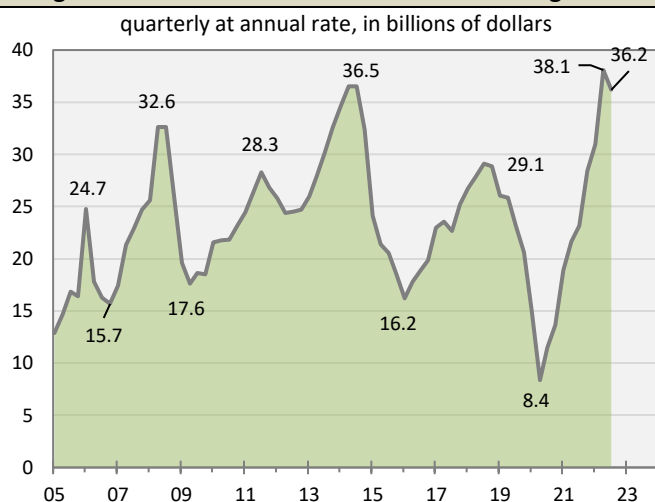
Oil value in the latest 12 months totaled \$13.8 billion but is now surpassed by natural gas valued at \$15.7 billion. Oil had consistently been the higher valued commodity in the decade from early 2012 through the second half of 2022.

**The current high valuations for production are expected to decline sharply in 2023 under current crude oil and natural gas price forecasts.** EIA forecasts call for WTI crude to fall from an average of \$94.91 in 2022 to \$77.18 in 2023 and Henry Hub natural gas to fall from \$6.42 per million BTU in 2022 to \$4.90 in 2023.

### High Oil and Gas Valuation Boosting State GDP

**The gains in oil and gas production value are driving strong increases in state gross domestic product (GDP).** State GDP produced in the mining sector grew rapidly in both 2021 and 2022, reaching a record annualized level of \$38.1 billion in the 2<sup>nd</sup> quarter before pulling back slightly to \$36.2 billion in the 3<sup>rd</sup> quarter (**Figure 16**). The recent peak in output surpassed the prior record level of \$36.5 billion set back in 2014.

**Figure 16. Oklahoma Nominal GDP from Mining Sector**

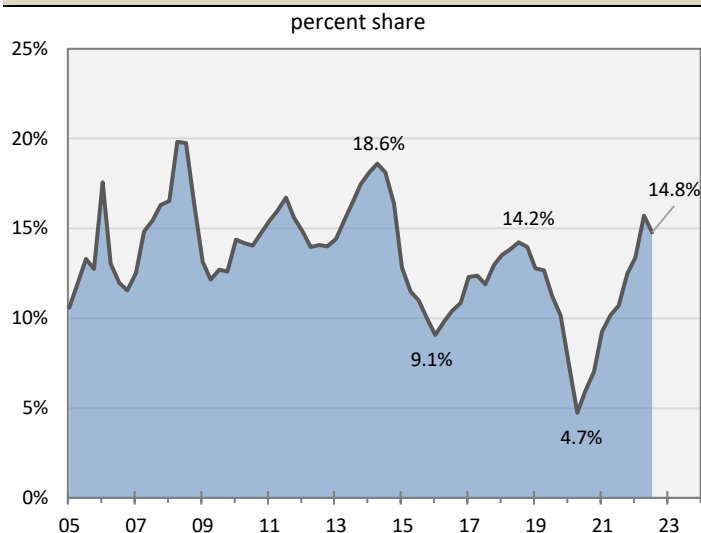


Source: Bureau of Economic Analysis

Current GDP from mining is also roughly four times higher than the \$8.4 billion in output posted at the recent bottom in the 2<sup>nd</sup> quarter of 2020. The 2020 low in industry output reflects both a collapse in energy prices and sharp pullback in output during the pandemic.

**The oil and gas industry continues to account for an outsized share of total state economic output (Figure 17).** Mining GDP as a share of total state GDP rebounded to 15.7% in the 2<sup>nd</sup> quarter of 2022 before easing to 14.8% in the 3<sup>rd</sup> quarter. The industry's current share reflects a more than tripling from the recent low of 4.7% in 2020 amidst collapsing oil prices and a pullback in production. The current share also remains above the 12.2% average share of total state output the past decade.

**Figure 17. Share of Total OK Nominal GDP from Mining Sector**



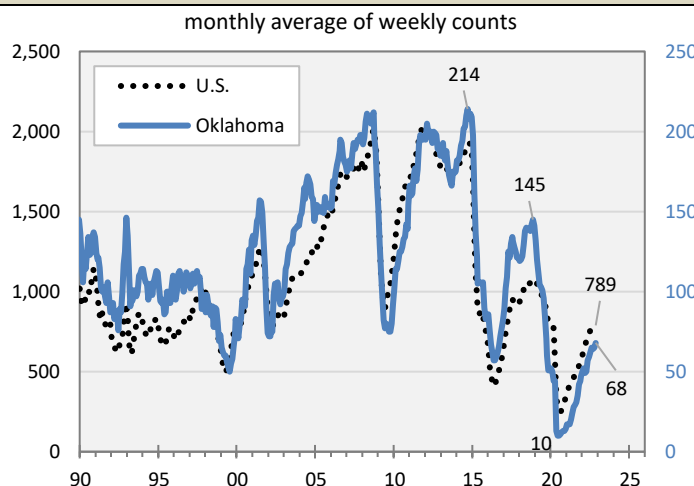
Source: Bureau of Economic Analysis and RegionTrack calculations

### U.S. Oil & Gas Investment Reflects Industry Caution

**State and national rig counts have remained in a steady uptrend since mid-year 2020.** In the most recent data for November 2022, the state had 68 active drilling rigs, up from only 10 rigs at the pandemic low in 2020 (**Figure 18**).

The current count remains less than half the 145 rigs active in the state at the recent peak in late 2018 and one-third the decade high of 214 rigs operating in 2014.

**Figure 18. Baker-Hughes Rig Count**



Source: Baker-Hughes Rig Count

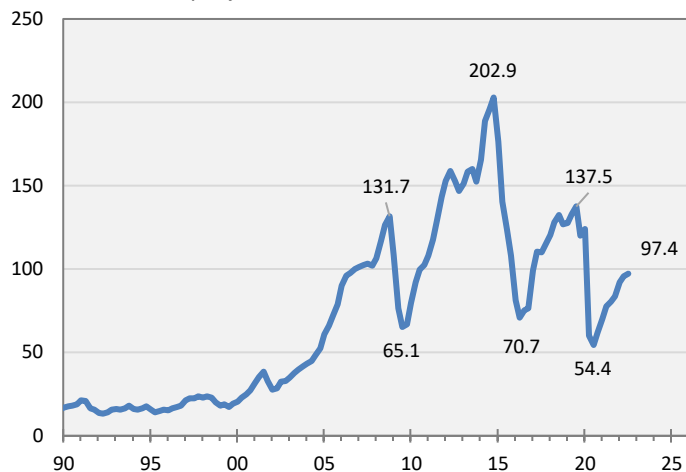
Rig counts also closely track the rebound in U.S. private fixed investment in oil and gas assets since 2020 (**Figure 19**). Total investment reached an annual rate of \$97.4 billion in the 3<sup>rd</sup> quarter of 2022, the eighth consecutive quarterly increase. This reflects a 21% increase from four quarters ago and a near doubling relative to the low following the onset of the pandemic.

Despite the uptrend in investment and rig activity, the level of drilling investment continues to reflect significant

underlying caution among drillers. Longer-term, U.S. oil and gas investment remains one-third below the recent high of \$137.5 billion in late 2019 and less than half the \$202.9 billion annual rate of spending in late 2014.

**Figure 19. U.S. Oil and Gas Fixed Private Investment**

seasonally adjusted, annual rate, in billions of dollars



Source: Bureau of Economic Analysis

Notes: Investment includes mining exploration, shafts, and wells

Rather than pursue production gains through increased investment, oil and gas explorers and producers remain far more focused on cash flow, sustainability, and investor returns. Regulatory and environmental concerns present a long-run headwind to greater investment while labor force shortages dominate the short-run concerns noted by oil and gas firms. More recently, tightening monetary policy presents a substantial risk to near term demand for both crude oil and natural gas.

### Contribution to the State Economy Remains High

The direct activity taking place within the state's oil and gas sector continues to make a substantial economic contribution to the overall state economy. In the first three quarters of 2022, oil and gas firms directly produced \$35.1 billion in annualized gross domestic product, generated \$12.7 billion in annualized income for state households, and employed an average of 75,293 wage and salary employees and self-employed workers.

Estimated economic spillover effects (indirect and induced) resulting from this activity are detailed in **Figure 20**. The direct output of the industry supported an incremental \$29.8 billion in spillover output in other industries statewide. The direct earnings supported an incremental \$11.0 billion in indirect and induced earnings for workers in other industries statewide. Direct employment in the industry supported an additional 123,402 jobs statewide through estimated indirect and induced effects.

Through direct and spillover effects, the state's oil and gas sector supported a total of \$64.9 billion in state GDP, \$23.7 billion in household income, and 198,695 jobs in the first three quarters of 2022. These total contributions represent 27.1% of total statewide GDP, 16.2% of total statewide household income, and 8.6% of total statewide employment in the first three quarters of 2022.

**Figure 20. Economic Spillover Effects (First 3 quarters of 2022)**

Type of Effect by Economic Measure	State GDP (\$billions)	Household Earnings (\$billions)	Total Employment
Direct Effect	\$35.1	\$12.7	75,293
Indirect & Induced Effect	29.8	11.0	123,402
<b>Total Effect</b>	<b>\$64.9</b>	<b>\$23.7</b>	<b>198,695</b>

Source: Bureau of Economic Analysis, RIMS, and RegionTrack calculations

Notes: Household earnings include both wage and salary income and the earnings of self-employed proprietors. Employment includes both wage and salary workers and self-employed proprietors.

### Record OK Gross Production Tax Revenue

Gross production tax (GPT) revenue is surging along with the sharply increased value of state oil and gas production (**Figure 21**). **Total GPT revenue reached a record \$1.985 billion in the 12 months ended December 2022.** This is a more than three-fold increase over the recent bottom in 12-month receipts of \$560 million only 18 months ago (March 2021).

Prior to the current surge, total GPT collections had exceeded \$1 billion in a 12-month period only briefly in 2008 and 2019. Total GPT collections are expected to exceed \$2 billion in a 12-month period for the first time in early 2023.

**Figure 21. Oklahoma Oil and Gas Gross Production Tax**

12-month rolling total, in billions of dollars



Source: Oklahoma Tax Commission and RegionTrack calculations

## GPT Provides Key Support to Public Education

Fiscal year 2022 (ended June 2022) produced a record \$1.5 billion in GPT revenue, roughly double the \$742 million collected in fiscal year 2021 (**Figure 22a**).

The annual apportionment of GPT revenue in the past decade is detailed in **Figure 23**. GPT revenue is first applied to several dedicated uses, with the remainder going to the general revenue fund. For fiscal year 2022, 38% (\$426 million) of GPT revenue was apportioned to dedicated uses with the remaining 72% (\$1.075 billion) going to the state's general revenue fund (**Figure 22b**).

The primary dedicated uses for fiscal year 2022 are road funds for counties (\$124 million) and funding for both common and higher education (\$265 million) (**Figure 22c**). All other dedicated sources received a total of \$37 million in fiscal year 2022.

The largest use of GPT revenue historically is public education. The role of GPT revenue in funding education extends beyond dedicated uses by also funding large contributions to the general revenue fund. These contributions comprise roughly half of all general revenue funds used for educational purposes in recent years. Assuming a 50% share of general revenue spent on education, approximately \$800 million in GPT revenue was used to fund public education in Oklahoma in fiscal year 2022.

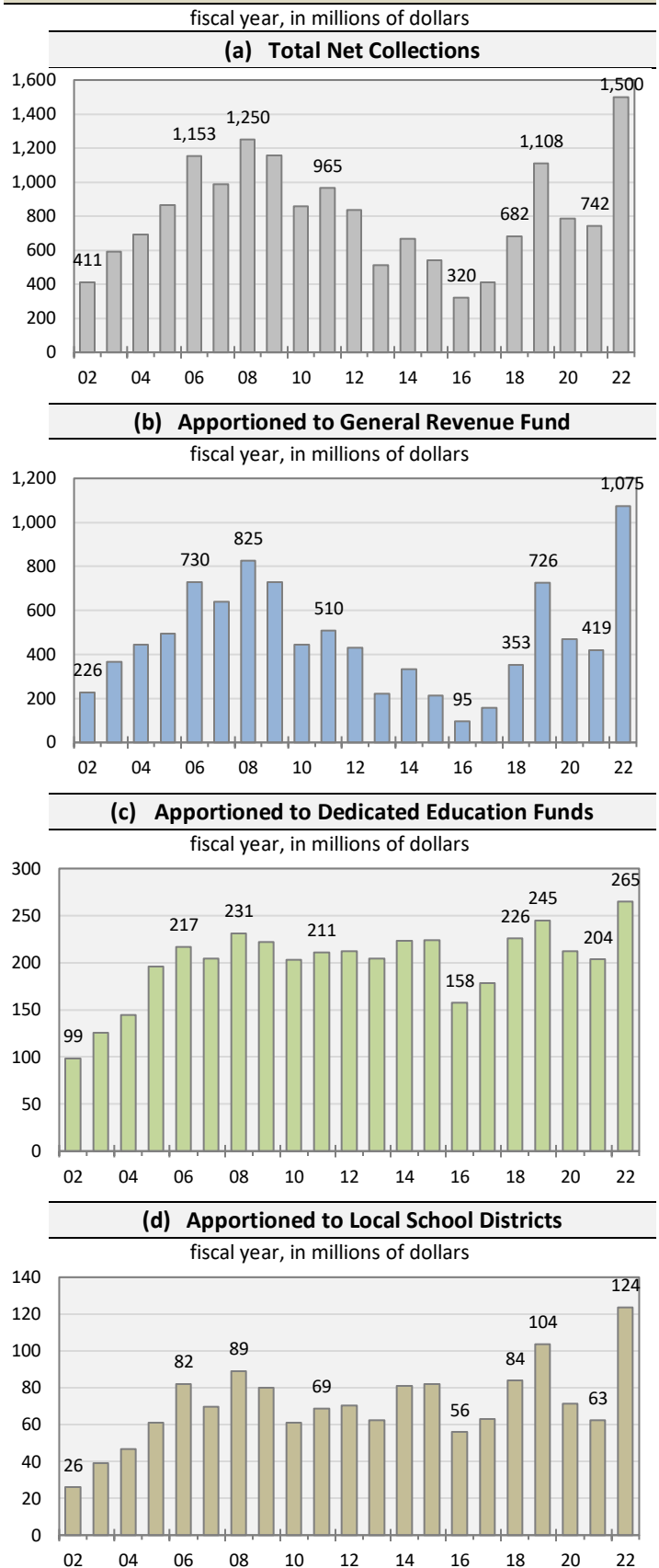
Over the past decade, GPT collections totaled \$7.27 billion (\$727 million annually). Contributions from GPT to the general revenue fund totaled \$4.06 billion in the past decade, or \$406 million annually. A ten-year total of \$2.14 billion in gross production tax revenue was apportioned for dedicated educational purposes, an average of \$214 million annually in the period. Assuming a 50% share of general fund revenue spent on education, total GPT contributions to public education reached \$4.17 billion in the past decade, or \$417 million annually in the period.

## Record GPT Revenue to Local School Districts

A portion of GPT revenue generated from oil and gas production within each county is allocated directly to independent school districts based on both an average daily attendance basis and the amount of local oil and gas production. The state's charter schools do not share in school district distributions of gross production tax revenue.

In fiscal year 2022, local school districts received total direct contributions of \$124 million in GPT revenue (**Figure 22d**). The past decade, GPT revenue to local school districts totaled \$789.3 million, or \$78.9 million annually.

**Figure 22. OK Gross Production Tax Revenue & Apportionment**



Source: Historical annual issues of *Apportionment of Statutory Revenues by the Oklahoma Tax Commission*. Available online at: <https://oklahoma.gov/tax/reporting-resources/statistics.html>



**County-Level GPT Distributions.** *Figure 24* provides a county-level breakdown of GPT distributions to school districts statewide in the past decade. Since some counties have large amounts of oil and gas production and others very little, there is substantial variation in the revenues received.

School districts in eight counties received distributions averaging more than \$3 million annually the past decade - Grady (\$7.5 million), Kingfisher (\$6.8 million), Canadian (\$6.3 million), Blaine (\$4.5 million), Stephens (\$4.0 million), Carter (\$3.5 million), Alfalfa (\$3.4 million), and Garvin (\$3.3 million). All eight counties are traditionally large oil and gas producers.

School districts in three additional counties received distributions averaging between \$2 million and \$3 million annually. This group includes Woods, Roger Mills, and Ellis, all traditional major oil and gas producing counties.

Districts in 12 additional counties received distributions averaging between \$1 million and \$2 million annually. These counties include Dewey, Pittsburg, Washita, McClain, Hughes, Beckham, Major, Garfield, Caddo, Custer, Texas, and Coal.

In total, school districts in 23 counties received at least \$1 million or more annually from oil and gas production taxes in the past decade.

Districts in 14 counties received between \$500,000 and \$1 million annually. Districts in a total of 13 counties received between \$100,000 and \$500,000 in oil and gas production taxes annually for the past decade.

School districts in 27 counties – Jefferson, Washington, Tillman, Murray, McIntosh, Nowata, Cimarron, Bryan, Jackson, Comanche, Cotton, Pushmataha, Kiowa, Muskogee, Wagoner, Sequoyah, Rogers, Mayes, Craig, Greer, Harmon, Delaware, Adair, Cherokee, Choctaw, McCurtain, and Ottawa – received less than \$100,000 annually in gross production revenue in the ten-year period. Historically, these counties are home to very little crude oil and natural gas production.

Gross production taxes paid in FY2022 were more highly concentrated outside the three largest counties in the state: Oklahoma (\$1.09 million), Tulsa (\$454,000), and Cleveland (\$152,500).

**School District-Level GPT Distributions.** *Figure 25* provides a breakdown of GPT distributions at the district level for the past decade. Larger school districts located in traditional oil and gas producing regions of the state tend to receive the largest distributions.

Fifteen individual school districts received more than \$1 million annually in gross production revenue from FY2013

to FY2022 - Kingfisher (\$2.7 million), Mustang (\$2.6 million), Chickasha (\$2.0 million), Yukon (\$2.0 million), Alva (\$1.9 million), Watonga (\$1.9 million), Duncan (\$1.85 million), Tuttle (\$1.7 million), Cherokee (\$1.6 million), Hennessey (\$1.6 million), Bridge Creek (\$1.4 million), Ardmore (\$1.2 million), Shattuck (\$1.1 million), Timberlake (\$1.1 million), and Cashion (\$1.1 million).

Thirty additional districts received between \$500,000 and \$1 million annually in the period. Forty-one districts received between \$250,000 and \$500,000 annually.

Sixty districts received between \$100,000 and \$250,000 annually. Fifty-three districts received between \$50,000 and \$100,000 annually.

In total, 199 of the 431 reporting school districts in Oklahoma received \$50,000 or more annually in gross production revenue between FY2013 and FY2022.

The average annual payment across all districts receiving a payment in the ten-year period was \$192,150 per year.

### **Oil and Gas Activity Remains Widespread in OK**

Oil and gas firms continue to operate in 76 of the state's 77 counties. *Figure 26* provides an overview of the number of oil and gas firms, oil and gas wage and salary employment, and wage and salary income earned in the mining sector in each county in the 2020 to 2022 period.

Fourteen counties were home to 50 or more oil and gas firms in 2022 – Oklahoma (720), Tulsa (302), Canadian (130), Carter (107), Beckham (84), Cleveland (87), Kingfisher (84), Stephens (76), Woodward (75), Garvin (70), Garfield (63), Creek (60), Payne (60), and Custer (56).

Fourteen counties also had oil and gas wage and salary employment of 500 or more in 2022 – Oklahoma (7,317), Tulsa (2,724), Washington (2,713), Beckham (1,920), Canadian (1,378), Carter (937), Kingfisher (725), Stephens (734), Woodward (848), Grady (737), Custer (704), Garfield (680), Garvin (588), and Dewey (517).

To evaluate the influence of oil and gas wages in each county, average wage and salary income earned per worker in the mining sector is provided along with the average wage in all sectors other than mining. The county-level estimates include only wage and salary income and exclude both employee benefits and proprietor income. This reflects a lag in data availability for counties relative to states. Hence, overall income averages reported for the state in *Figure 26* will be lower than income estimates for the state discussed earlier in the report that include both employee benefits and proprietor income.

Nearly all counties have far higher average wages in the mining sector than the non-mining sectors. Mining is also

typically the highest paying sector in most counties. Statewide, mining sector wage and salary income averaged \$114,825 in 2022, more than double (2.2x) the average across all other sectors. Counties where the average annual wage in mining is more than double the average wage in the non-mining sectors include Latimer (3.8x), Cimarron (3.4x), Oklahoma (3.3x), Washington (3.1x), Custer (2.8x), Ottawa (2.8x), Canadian (2.3x), Major (2.3x), Blaine (2.2x), Tulsa (2.2x), Woods (2.2x), and Grady (2.0x).

The ratio is generally highest in three counties with a large concentration of white-collar oil and gas employment – Oklahoma, Tulsa, and Washington – and in several additional small rural counties with low average wages overall. Excluding Oklahoma, Tulsa, and Washington counties, mining sector wages in the remaining counties are 1.6 times higher than in all other sectors combined.

*Released January 23, 2023*

**Figure 23. Apportionment of Oklahoma Gross Production Tax**

Fiscal Year	Total Apportionment	General Revenue Fund	Dedicated Uses						Total Education-Related Dedicated Uses**
			Returned to Counties for Roads	To School Districts	Common Education Technical Fund	Higher Education Capital Fund	Oklahoma Student Aid Revolving Fund	Other*	
2012	835,987,836	430,478,292	70,326,434	70,326,434	47,372,298	47,372,298	47,372,298	122,739,753	212,443,328
2013	513,576,262	221,610,957	62,542,178	62,542,178	47,372,298	47,372,298	47,372,298	24,764,055	204,659,072
2014	665,570,660	333,239,402	80,971,420	80,971,420	47,372,295	47,372,296	47,372,295	28,271,533	223,088,306
2015	542,074,273	213,359,735	81,878,193	81,878,193	47,372,290	47,372,290	47,372,290	22,841,280	223,995,063
2016	319,784,759	95,011,360	55,965,659	55,965,659	33,890,977	33,890,977	33,890,977	11,169,150	157,638,590
2017	411,219,672	157,437,279	62,893,884	62,893,884	38,404,347	38,404,347	38,404,347	12,781,585	178,106,925
2018	682,072,596	353,386,508	83,861,652	83,861,652	47,371,864	47,371,864	47,371,864	18,847,192	225,977,244
2019	1,108,442,208	725,874,440	103,758,080	103,758,080	47,017,214	47,017,214	47,017,214	33,999,966	244,809,722
2020	785,072,369	469,825,178	71,370,647	71,370,647	46,938,567	46,938,567	46,938,567	31,690,196	212,186,348
2021	742,178,565	418,599,637	62,516,699	62,516,699	47,035,978	47,035,978	47,035,978	57,437,597	203,624,632
2022	1,500,357,745	1,074,723,198	123,556,991	123,556,991	47,111,046	47,111,046	47,111,046	37,187,429	264,890,127
10-year Total	\$7,270,349,109	\$4,063,067,694	\$789,315,403	\$789,315,403	\$449,886,875	\$449,886,876	\$449,886,875	\$278,989,983	\$2,138,976,030
10-year Average	\$727,034,911	\$406,306,769	\$78,931,540	\$78,931,540	\$44,988,688	\$44,988,688	\$44,988,688	\$27,898,998	\$213,897,603

Source: Historical annual issues of *Apportionment of Statutory Revenues by the Oklahoma Tax Commission*. Available online at: <https://oklahoma.gov/tax/reporting-resources/statistics.html>

\* "Other" includes but is not limited to: Community Water Infrastructure Development Revolving Fund, Conservation Commission Infrastructure Revolving Fund, County Bridge and Road Fund, OK Water Resources Board, Tourism & Recreation Capital Expenditure Revolving Fund, and the Statewide Circuit Engineering District Revolving Fund. Funds not included here received only a one-time payment from Severance Taxes.

\*\* Education-Related Distributions include School Districts, Common Education Technical Fund, Higher Education Capital Fund, and Oklahoma Student Aid Revolving Fund. Historically, a substantial portion (roughly 50%) of the contribution to the General Revenue Fund is also used for general education expenditures.

**Figure 24. Gross Production Tax Distributions to School Districts by County**

County	FY2012	FY2013	FY2014	FY2015	FY2016	FY2017	FY2018	FY2019	FY2020	FY2021	FY2022	10-Yr Avg
Adair	993	442	0	0	4	0	0	0	43	24	21	53
Alfalfa	706,616	1,733,355	3,737,264	6,675,851	4,415,648	4,753,655	4,189,147	3,705,625	1,677,233	865,344	1,999,391	3,375,251
Atoka	292,346	178,799	153,328	130,222	92,847	110,791	107,118	115,695	91,700	112,532	225,175	131,821
Beaver	1,391,075	1,293,302	2,151,798	1,643,232	723,908	629,900	628,172	720,644	361,649	262,439	552,894	896,794
Beckham	1,443,981	1,660,075	1,781,381	2,243,343	1,505,923	1,351,987	1,171,866	1,254,748	621,607	431,055	760,302	1,278,229
Blaine	962,220	896,125	1,785,561	1,252,261	680,358	1,311,146	4,645,585	10,772,602	8,354,138	6,303,688	8,657,808	4,465,927
Bryan	70,534	80,793	95,655	78,492	42,156	33,957	48,319	60,447	31,651	52,875	40,162	56,451
Caddo	2,699,846	1,475,751	1,764,750	1,520,317	907,452	966,132	1,115,978	1,182,512	791,445	600,724	1,487,991	1,181,305
Canadian	3,229,388	2,251,677	4,155,784	4,940,761	3,649,425	4,211,583	7,258,212	10,069,211	7,559,656	5,880,189	13,238,779	6,321,528
Carter	5,058,388	3,792,832	5,665,667	4,888,488	3,635,591	2,441,572	2,964,337	3,824,650	2,475,133	1,559,204	3,263,473	3,451,095
Cherokee	0	0	0	0	0	0	0	60	0	0	0	6
Choctaw	0	0	0	0	0	0	0	0	0	0	0	0
Cimarron	83,952	55,041	59,823	74,699	65,155	70,075	74,718	76,363	47,186	21,309	36,773	58,114
Cleveland	276,820	250,231	259,126	205,330	121,629	121,614	139,537	144,623	101,597	56,601	124,962	152,525
Coal	1,702,949	1,024,043	1,280,895	1,097,825	940,992	1,092,211	1,259,411	1,172,996	609,618	814,931	1,449,107	1,074,203
Comanche	131,338	76,328	86,526	62,250	33,565	30,983	36,536	34,631	21,599	11,187	25,580	41,918
Cotton	91,007	61,966	78,413	54,373	26,751	22,434	24,276	28,127	20,848	8,872	19,147	34,521
Craig	3,375	2,263	2,837	2,208	1,183	1,825	1,138	672	333	743	2,358	1,556
Creek	869,072	1,286,504	1,041,695	865,392	559,952	541,782	615,499	716,920	578,372	266,723	627,900	710,074
Custer	1,587,679	931,034	889,602	829,663	517,971	594,576	985,927	1,450,722	994,610	1,248,896	2,774,880	1,121,788
Delaware	0	0	43	173	95	0	393	0	0	0	0	70
Dewey	1,426,228	1,316,012	1,999,118	1,773,299	930,933	1,100,734	1,684,940	2,853,213	2,356,165	1,258,745	2,060,455	1,733,361
Ellis	2,889,377	3,276,044	3,918,098	3,579,806	1,820,449	1,941,727	2,136,857	2,578,559	2,167,248	1,426,542	2,586,565	2,543,189
Garfield	463,229	452,173	943,272	1,355,773	1,630,831	1,783,840	1,550,454	1,604,632	1,264,366	673,448	1,144,343	1,240,313
Garvin	3,009,522	2,098,126	2,715,211	3,061,771	1,958,364	2,373,972	2,957,959	4,219,971	3,481,982	3,330,331	6,888,333	3,308,602
Grady	2,857,572	2,381,265	3,405,966	4,384,743	3,893,360	4,911,477	8,417,367	11,126,461	8,919,201	8,874,688	18,703,928	7,501,846
Grant	519,630	940,730	2,030,543	2,412,169	1,125,695	859,422	672,844	652,273	305,712	176,351	294,727	947,047
Greer	1,756	2,029	1,882	1,419	989	864	2,291	2,714	910	427	1,287	1,481
Harmon	2,970	1,603	1,517	1,329	568	483	751	823	631	299	1,033	904
Harper	702,110	630,990	568,348	429,364	304,393	219,912	240,808	250,513	114,490	107,363	228,902	309,508
Haskell	239,256	144,526	153,834	117,807	61,382	115,650	109,071	106,456	48,844	101,464	205,245	116,428
Hughes	1,462,553	787,398	849,219	701,956	742,177	1,020,270	1,312,273	1,912,580	1,302,193	1,354,554	2,825,717	1,280,834
Jackson	43,753	36,418	125,034	108,221	63,740	34,482	43,668	35,228	25,061	7,535	18,046	49,743
Jefferson	258,301	180,253	256,430	124,358	22,020	33,632	39,154	52,054	55,158	37,226	63,791	86,408
Johnston	230,318	172,641	278,385	354,839	315,043	255,799	284,619	329,412	492,568	244,115	543,826	327,125
Kay	879,618	652,819	923,799	1,047,164	825,443	494,490	450,751	422,071	262,247	134,829	301,418	551,503
Kingfisher	1,173,485	892,829	1,190,708	1,874,411	1,871,157	4,256,329	9,545,509	13,572,427	13,046,798	7,510,597	14,833,099	6,859,386
Kiowa	66,780	36,214	33,769	24,945	19,660	19,469	28,215	19,077	10,423	10,094	29,485	23,135
Latimer	1,134,710	802,517	773,336	311,814	263,635	452,560	519,815	309,801	232,241	345,804	861,608	487,313

*Continued*

**Figure 24. (Cont.) Gross Production Tax Distributions to School Districts by County**

County	FY2012	FY2013	FY2014	FY2015	FY2016	FY2017	FY2018	FY2019	FY2020	FY2021	FY2022	10-Yr Avg
Le Flore	337,151	224,295	254,881	159,348	74,810	171,403	183,300	144,453	74,821	117,383	252,657	165,735
Lincoln	914,626	660,523	816,076	517,498	511,173	629,477	764,139	719,233	375,734	259,216	512,563	576,563
Logan	445,654	515,335	834,859	1,928,341	1,468,921	748,259	1,178,218	1,100,342	844,031	473,144	888,540	997,999
Love	311,526	334,263	631,590	450,998	357,391	840,944	1,076,173	1,039,088	862,411	478,116	1,133,518	720,449
Major	1,992,499	1,290,035	1,426,478	1,241,155	713,755	642,011	1,002,938	1,775,949	1,499,991	1,100,353	1,797,806	1,249,047
Marshall	460,979	683,666	690,129	790,834	532,368	394,431	492,489	604,118	287,422	290,219	796,064	556,174
Mayes	9,610	1,456	2,209	1,451	754	5,424	4,977	5,038	3,750	1,354	3,440	2,985
McClain	1,008,003	806,392	1,087,165	841,289	569,802	528,141	1,025,035	1,643,191	2,328,032	1,625,318	3,710,110	1,416,448
McCurtain	0	0	0	0	0	0	0	0	0	0	0	0
McIntosh	84,402	42,201	37,660	28,384	15,218	26,184	23,085	21,544	16,504	165,105	311,412	68,730
Murray	155,750	154,251	142,269	98,378	42,630	50,320	60,887	77,977	48,599	26,623	46,744	74,868
Muskogee	27,991	32,444	32,287	25,780	9,811	15,356	20,620	15,983	10,021	5,423	11,382	17,911
Noble	699,912	541,371	1,010,959	1,181,970	878,254	391,166	483,759	413,884	331,849	168,710	363,126	576,505
Nowata	182,214	108,321	151,457	60,378	50,629	65,324	53,106	48,988	32,608	20,104	29,993	62,091
Okfuskee	178,349	267,436	293,464	288,259	181,914	174,142	181,331	175,774	130,075	128,291	243,669	206,435
Oklahoma	1,351,368	1,512,883	1,298,260	1,243,317	714,323	762,404	865,854	856,085	640,342	566,014	1,266,237	972,572
Okmulgee	160,845	169,142	169,518	161,138	79,193	83,486	105,794	116,554	80,690	38,808	73,715	107,804
Osage	1,922,188	1,318,157	1,674,914	927,242	536,404	770,994	796,678	1,046,438	670,855	398,191	885,496	902,537
Ottawa	0	0	0	0	0	0	0	0	0	0	0	0
Pawnee	261,078	292,457	435,824	365,755	166,718	173,099	162,630	233,784	150,967	74,353	163,018	221,860
Payne	347,070	436,780	749,948	1,559,140	1,203,840	770,496	1,008,185	776,276	514,868	215,244	384,697	761,947
Pittsburg	1,945,531	1,645,193	2,048,865	1,610,941	1,073,776	1,435,756	1,596,083	1,336,612	917,616	1,133,205	2,022,307	1,482,035
Pontotoc	526,000	1,780,615	1,313,868	1,378,858	698,472	509,936	660,924	723,786	600,091	270,686	628,495	856,573
Pottawatomie	514,900	915,667	749,400	757,488	404,091	285,668	371,754	370,286	307,118	154,962	347,650	466,408
Pushmataha	31,021	50,470	40,758	43,693	19,682	26,053	39,165	39,022	17,867	13,645	47,657	33,801
Roger Mills	2,619,050	2,778,536	4,037,314	4,650,795	2,808,447	2,295,090	2,383,313	2,472,974	1,308,947	877,871	1,837,027	2,545,031
Rogers	37,215	22,480	30,632	14,264	9,318	11,371	11,004	10,724	5,465	3,798	6,319	12,538
Seminole	1,001,150	1,565,123	1,453,713	1,171,253	779,374	705,342	797,917	788,714	617,486	351,073	709,142	893,914
Sequoyah	37,519	20,254	17,000	11,996	10,591	16,200	13,130	12,549	5,462	8,112	21,249	13,654
Stephens	3,595,768	2,307,879	3,508,388	4,232,663	3,806,159	3,717,711	4,749,720	5,614,464	3,236,853	2,459,712	6,394,333	4,002,788
Texas	2,409,774	1,903,532	1,599,903	1,069,640	669,419	1,162,719	1,153,518	1,231,840	668,255	431,511	1,018,696	1,090,903
Tillman	112,608	85,899	228,010	182,442	59,435	38,295	43,284	64,394	39,963	16,742	42,248	80,071
Tulsa	964,958	851,060	944,567	408,454	241,427	359,497	373,511	488,565	305,342	173,527	393,836	453,979
Wagoner	35,216	24,293	31,088	34,271	18,109	13,953	13,142	13,588	6,871	2,352	2,955	16,062
Washington	265,647	140,185	183,097	70,409	50,804	80,899	76,587	92,671	54,971	30,765	58,879	83,927
Washita	6,269,982	2,890,848	2,730,115	2,527,183	1,266,496	1,044,176	1,063,382	857,452	473,414	517,385	984,698	1,435,515
Woods	2,597,269	1,724,824	3,460,533	5,120,367	2,788,893	3,163,986	3,094,947	2,680,414	1,376,998	723,162	1,621,643	2,575,577
Woodward	886,079	545,542	460,027	491,661	297,811	264,761	412,473	609,108	391,835	191,430	301,984	396,663
<b>All Counties</b>	<b>\$72,663,646</b>	<b>\$60,498,956</b>	<b>\$79,735,839</b>	<b>\$83,877,100</b>	<b>\$56,880,656</b>	<b>\$60,535,813</b>	<b>\$81,606,568</b>	<b>\$103,601,375</b>	<b>\$77,662,782</b>	<b>\$57,603,655</b>	<b>\$116,191,816</b>	<b>\$77,819,456</b>

Source: Oklahoma State Department of Education – Oklahoma Cost Accounting System. Available online at: [https://sdeweb01.sde.ok.gov/OCAS\\_Reporting/StateReports.aspx](https://sdeweb01.sde.ok.gov/OCAS_Reporting/StateReports.aspx)

Note: Total severance tax payments to school districts by county reported by the Oklahoma State Dept. of Education is \$7.365 million less than the amount reported by the Oklahoma Tax Commission for FY2022.



**Figure 25. Gross Production Tax Distributions to School Districts by County/District**

County	School District	FY2012	FY2013	FY2014	FY2015	FY2016	FY2017	FY2018	FY2019	FY2020	FY2021	FY2022	10-Yr Avg
Adair	Cave Springs	993	19	0	0	0	0	0	0	3	1	0	2
Adair	Dahlonegah	0	0	0	0	0	0	0	0	0	0	0	0
Adair	Stilwell	0	194	0	0	2	0	0	0	19	11	21	25
Adair	Watts	0	56	0	0	1	0	0	0	4	2	0	6
Adair	Westville	0	173	0	0	2	0	0	0	17	10	0	20
Alfalfa	Burlington	165,371	377,123	782,657	1,252,508	830,532	947,167	872,314	705,228	278,521	138,256	325,119	650,942
Alfalfa	Cherokee	294,164	779,185	1,711,859	3,134,063	2,076,783	2,302,327	1,999,822	1,774,902	825,341	435,194	1,043,251	1,608,273
Alfalfa	Timberlake	247,081	577,047	1,242,748	2,289,280	1,508,332	1,504,161	1,317,011	1,225,494	573,371	291,895	631,022	1,116,036
Atoka	Atoka	141,980	85,830	71,453	60,667	44,555	55,237	53,675	56,398	44,663	54,444	105,555	63,248
Atoka	Caney	39,212	26,302	21,987	18,815	12,844	15,246	13,777	15,299	12,132	15,991	33,387	18,578
Atoka	Stringtown	35,486	20,022	19,603	17,993	12,981	14,887	14,336	14,964	11,918	14,299	28,823	16,982
Atoka	Tushka	75,669	46,646	40,285	32,747	22,468	25,421	25,329	29,035	22,988	27,798	57,411	33,013
Beaver	Balko	192,291	189,101	320,259	232,112	102,068	89,990	90,859	103,629	52,436	38,413	83,868	130,274
Beaver	Beaver	473,306	430,580	688,962	549,383	247,967	203,747	206,342	228,468	108,200	75,881	164,185	290,372
Beaver	Forgan	226,316	207,157	337,687	227,332	93,519	88,554	84,909	96,397	47,267	34,237	72,396	128,945
Beaver	Turpin	499,162	466,465	804,889	634,405	280,354	247,610	246,062	292,149	153,746	113,908	232,444	347,203
Beckham	Elk City	872,917	983,653	1,042,960	1,281,889	835,794	728,343	626,939	680,256	339,911	238,953	406,702	716,540
Beckham	Erick	92,336	111,042	120,302	145,449	95,611	94,230	79,316	81,689	38,390	24,845	45,662	83,654
Beckham	Merritt	211,414	266,436	295,290	397,510	288,648	272,778	242,516	259,123	128,185	89,586	173,176	241,325
Beckham	Sayre	267,314	298,944	322,828	418,495	285,869	256,636	223,095	233,680	115,121	77,671	134,761	236,710
Blaine	Canton	201,982	183,215	355,450	250,530	141,602	269,115	959,232	2,152,545	1,674,830	1,249,341	1,707,645	894,350
Blaine	Geary	208,789	193,998	384,560	267,420	144,527	269,315	919,831	2,028,225	1,633,705	1,156,289	1,572,207	857,008
Blaine	Okeene	163,394	155,358	300,736	214,506	117,678	228,614	871,190	2,038,810	1,611,673	1,183,095	1,687,954	840,961
Blaine	Watonga	388,055	363,554	744,815	519,806	276,551	544,101	1,895,332	4,553,021	3,433,931	2,714,963	3,690,003	1,873,608
Bryan	Achille	3,666	3,733	4,097	3,250	1,699	1,412	2,132	2,744	1,330	994	1,661	2,305
Bryan	Bennington	2,569	3,115	3,471	2,909	1,631	1,338	2,042	2,686	1,353	927	1,597	2,107
Bryan	Caddo	4,859	5,411	6,266	4,975	2,618	2,169	3,122	3,907	2,044	1,504	2,709	3,472
Bryan	Calera	6,106	7,031	8,336	6,976	3,871	3,128	4,683	5,909	3,106	2,320	4,414	4,977
Bryan	Colbert	8,495	9,536	11,452	9,319	4,648	3,653	5,147	6,175	3,089	31,752	3,807	8,858
Bryan	Durant	32,882	38,278	44,962	37,246	20,159	16,328	22,725	28,465	14,973	11,127	18,441	25,271
Bryan	Rock Creek	4,598	5,123	6,295	5,109	2,716	2,086	2,956	3,752	2,022	1,364	2,418	3,384
Bryan	Silo	7,359	8,568	10,776	8,707	4,813	3,844	5,512	6,809	3,734	2,887	5,114	6,076
Caddo	Anadarko	844,981	480,247	575,733	490,078	288,794	298,251	337,765	350,281	228,042	173,042	412,648	363,488
Caddo	Binger-Oney	152,236	79,845	109,128	101,398	60,929	59,823	66,188	70,298	48,030	37,159	94,177	72,698
Caddo	Boone-Apache	266,764	142,927	165,391	150,332	90,423	94,104	108,190	122,900	82,391	61,884	148,282	116,683
Caddo	Carnegie	275,892	141,187	170,794	145,503	87,552	94,058	111,447	117,761	78,504	59,324	149,932	115,606
Caddo	Cement	116,551	62,228	76,535	62,062	35,991	41,458	45,371	50,692	33,290	23,312	59,784	49,072
Caddo	Cyril	157,844	87,206	100,561	88,418	57,482	62,826	73,593	73,918	50,458	37,954	102,839	73,526
Caddo	Fort Cobb-Broxton	157,843	86,150	104,941	85,479	50,403	55,888	64,617	66,989	46,171	36,701	84,647	68,199
Caddo	Gracemont	73,920	40,578	44,189	38,423	22,784	24,047	31,702	34,613	21,334	13,566	37,874	30,911
Caddo	Hinton	321,721	171,911	204,242	177,059	105,687	117,632	137,499	156,431	106,266	79,921	201,265	145,791
Caddo	Hydro-Eakly	218,541	120,604	140,094	113,882	65,950	74,083	87,830	87,503	62,997	51,685	130,730	93,536
Caddo	Lookaba Sickles	113,553	62,867	73,142	67,681	41,456	43,961	51,775	51,125	33,962	26,176	65,814	51,796
Canadian	Calumet	41,880	30,392	56,298	59,673	41,066	43,755	67,960	94,544	68,459	58,621	136,794	65,756
Canadian	El Reno	362,206	246,125	439,575	494,601	370,168	430,547	729,604	1,004,746	751,300	580,458	1,265,194	631,232

**Figure 25. (Cont.) Gross Production Tax Distributions to School Districts by County/District**

County	School District	FY2012	FY2013	FY2014	FY2015	FY2016	FY2017	FY2018	FY2019	FY2020	FY2021	FY2022	10-Yr Avg
Canadian	Mustang	1,289,535	904,331	1,676,378	2,009,382	1,505,389	1,743,160	2,992,039	4,150,637	3,145,632	2,458,401	5,508,995	2,609,434
Canadian	Piedmont	408,128	288,304	546,680	663,684	500,233	593,648	1,051,638	1,505,122	1,153,115	919,696	2,141,840	936,396
Canadian	Union City	44,935	28,399	51,713	60,677	43,302	48,421	86,157	119,497	84,370	64,148	142,050	72,874
Canadian	Yukon	1,082,704	754,126	1,385,140	1,652,744	1,189,267	1,352,053	2,330,813	3,194,664	2,356,780	1,798,866	4,043,906	2,005,836
Carter	Ardmore	1,719,929	1,273,849	1,937,201	1,672,348	1,248,995	817,692	973,629	1,234,276	814,619	511,408	1,051,126	1,153,514
Carter	Dickson	762,671	579,930	831,107	725,584	534,264	368,660	451,951	598,344	386,566	242,082	528,253	524,674
Carter	Fox	172,599	127,380	190,584	170,950	128,591	83,244	103,892	134,302	80,061	44,874	84,490	114,837
Carter	Healdton	295,258	216,126	337,362	300,088	212,069	141,040	178,238	224,217	141,725	92,061	196,420	203,935
Carter	Lone Grove	881,493	665,095	959,732	800,986	606,420	412,314	492,972	656,567	420,069	266,698	557,131	583,798
Carter	Plainview	825,215	621,097	952,951	825,058	624,343	427,626	533,896	691,869	448,200	284,100	594,813	600,395
Carter	Springer	137,585	99,906	147,016	118,285	83,727	59,924	78,403	104,412	69,116	39,033	80,912	88,073
Carter	Wilson	263,637	209,449	309,714	275,189	197,182	131,072	151,357	180,663	114,777	78,949	170,328	181,868
Cherokee	Hulbert	0	0	0	0	0	0	0	7	0	0	0	1
Cherokee	Keys	0	0	0	0	0	0	0	10	0	0	0	1
Cherokee	Shady Grove	0	0	0	0	0	0	0	0	0	0	0	0
Cherokee	Tahlequah	0	0	0	0	0	0	0	43	0	0	0	4
Cimarron	Boise City	54,227	33,811	38,783	48,151	42,000	43,221	43,893	49,585	33,942	16,712	29,585	37,968
Cimarron	Felt	14,813	11,230	11,841	14,805	12,210	14,301	17,039	16,447	9,788	4,598	7,189	11,945
Cimarron	Keyes	14,912	10,000	9,198	11,743	10,945	12,553	13,786	10,331	3,456	0	0	8,201
Cleveland	Lexington	7,068	6,224	6,559	5,331	3,179	3,008	3,334	3,273	2,372	1,221	2,753	3,725
Cleveland	Little Axe	8,073	6,897	6,915	5,774	3,417	3,342	3,788	4,100	3,022	1,524	3,217	4,200
Cleveland	Moore	147,126	133,426	138,113	110,612	65,379	64,250	73,753	77,643	57,567	29,572	67,354	81,767
Cleveland	Noble	18,963	16,489	16,770	13,541	7,913	7,601	8,606	8,886	6,342	3,286	7,896	9,733
Cleveland	Norman	95,590	87,196	90,768	70,072	41,741	43,413	50,056	50,722	32,294	20,999	43,742	53,100
Coal	Coalgate	1,249,306	756,628	952,521	803,163	691,230	794,672	910,515	847,382	446,077	597,053	1,065,122	786,436
Coal	Olney	0	0	0	0	0	0	0	0	0	0	0	0
Coal	Tupelo	453,643	267,415	328,374	294,662	249,762	297,539	348,895	325,615	163,542	217,879	383,986	287,767
Comanche	Cache	10,468	6,440	7,947	5,416	3,005	2,851	3,536	3,519	2,229	1,190	2,678	3,881
Comanche	Chattanooga	1,694	1,009	1,134	700	365	343	431	409	275	138	318	512
Comanche	Elgin	11,302	7,122	9,153	6,300	3,549	3,420	4,160	4,088	2,598	1,271	3,129	4,479
Comanche	Fletcher	2,883	1,649	2,024	1,440	773	726	810	789	491	278	664	964
Comanche	Geronimo	2,208	1,220	1,499	1,071	552	495	591	600	361	188	428	700
Comanche	Indianoma	1,298	835	997	645	358	330	362	352	238	117	263	450
Comanche	Lawton	98,913	56,520	61,848	45,398	24,287	22,187	25,928	24,177	14,976	7,797	17,620	30,074
Comanche	Sterling	2,572	1,534	1,923	1,280	675	630	718	697	430	207	479	857
Cotton	Big Pasture	17,495	11,211	14,603	10,528	4,954	4,146	4,645	5,463	4,089	1,680	3,731	6,505
Cotton	Temple	18,196	12,181	13,086	8,135	4,184	3,731	4,391	5,147	3,652	1,600	3,748	5,985
Cotton	Walters	55,316	38,574	50,723	35,711	17,614	14,557	15,241	17,517	13,107	5,592	11,668	22,030
Craig	Bluejacket	238	179	230	164	85	148	91	54	27	64	213	125
Craig	Ketchum	753	503	607	500	266	405	261	160	83	183	586	355
Craig	Vinita	1,877	1,289	1,631	1,279	688	1,038	647	371	185	411	1,263	880
Craig	Welch	430	293	368	266	145	233	139	86	38	85	296	195
Craig	White Oak	76	0	0	0	0	0	0	0	0	0	0	0
Creek	Bristow	129,303	193,393	158,775	131,755	85,117	85,318	98,034	114,669	91,330	44,436	104,573	110,740
Creek	Depew	28,463	42,373	37,494	30,821	18,945	18,135	21,643	24,781	19,840	9,454	21,989	24,547

**Figure 25. (Cont.) Gross Production Tax Distributions to School Districts by County/District**

County	School District	FY2012	FY2013	FY2014	FY2015	FY2016	FY2017	FY2018	FY2019	FY2020	FY2021	FY2022	10-Yr Avg
Creek	Drumright	48,422	70,851	56,170	46,809	29,332	27,143	28,845	36,538	45,341	11,963	25,619	37,861
Creek	Kellyville	90,202	131,708	104,191	85,755	54,302	50,816	55,153	61,768	46,357	21,406	48,128	65,958
Creek	Kiefer	40,039	65,601	58,594	51,814	35,296	35,661	43,393	53,948	45,672	23,400	54,332	46,771
Creek	Mannford	116,258	172,735	138,144	118,224	77,675	76,605	85,074	96,630	76,204	36,940	88,227	96,646
Creek	Mounds	51,640	69,134	54,982	46,242	28,800	28,004	31,920	39,549	30,573	14,676	37,009	38,089
Creek	Oilton	22,383	32,626	27,165	20,313	13,547	13,818	15,937	18,097	13,921	6,306	15,639	17,737
Creek	Olive	30,169	45,515	35,641	29,661	18,524	17,067	19,830	22,026	14,865	6,691	15,745	22,556
Creek	Sapulpa	312,191	462,567	370,540	303,998	198,415	189,215	215,670	248,914	194,268	91,449	216,640	249,168
Custer	Arapaho-Butler	115,538	66,871	64,770	61,704	38,237	47,733	83,742	126,011	85,755	109,618	262,862	94,730
Custer	Clinton	697,852	419,973	389,469	358,965	219,591	248,584	401,672	583,011	392,987	486,977	1,091,815	459,304
Custer	Thomas-Fay-Custer UD	154,967	87,627	81,585	73,654	46,801	51,762	89,631	135,309	89,015	107,637	261,018	102,404
Custer	Weatherford	619,322	356,564	353,779	335,340	213,342	246,498	410,881	606,391	426,853	544,664	1,159,183	465,350
Delaware	Colcord	0	0	5	17	10	0	39	0	0	0	0	7
Delaware	Grove	0	0	18	73	41	0	167	0	0	0	0	30
Delaware	Jay	0	0	12	50	25	0	111	0	0	0	0	20
Delaware	Kansas	0	0	6	26	15	0	60	0	0	0	0	11
Delaware	Oaks-Mission	0	0	2	7	4	0	16	0	0	0	0	3
Dewey	Seiling	723,690	667,246	1,003,402	893,240	480,027	553,990	873,555	1,459,958	1,247,596	667,479	1,071,031	891,752
Dewey	Taloga	176,044	150,076	179,398	145,694	80,455	126,016	167,048	334,359	271,387	132,139	244,346	183,092
Dewey	Vici	526,494	498,690	816,317	734,365	370,451	420,728	644,337	1,058,896	837,183	459,127	745,078	658,517
Ellis	Arnett	601,280	760,588	921,882	806,414	442,310	489,587	537,569	591,471	483,131	313,266	549,288	589,551
Ellis	Fargo	780,038	798,889	947,555	860,587	435,816	630,656	626,885	774,282	631,934	445,236	780,410	693,225
Ellis	Gage	379,106	366,622	422,503	374,037	150,304	0	0	0	0	0	0	131,347
Ellis	Shattuck	1,128,952	1,349,945	1,626,158	1,538,767	792,019	821,484	972,404	1,212,806	1,052,183	668,040	1,256,866	1,129,067
Garfield	Chisholm	43,070	39,600	84,212	122,074	152,732	165,720	154,219	165,952	136,100	71,583	123,699	121,589
Garfield	Covington-Douglas	13,634	12,764	24,904	34,946	40,314	43,292	38,151	40,904	33,359	16,608	29,014	31,426
Garfield	Drummond	15,378	14,640	29,427	41,562	47,157	49,577	47,890	50,527	40,201	21,687	38,667	38,133
Garfield	Enid	318,244	314,911	661,586	953,881	1,152,354	1,259,820	1,079,476	1,111,362	871,346	466,501	785,799	865,704
Garfield	Garber	15,642	14,975	33,188	45,170	55,262	59,743	51,236	52,602	43,790	24,090	43,139	42,319
Garfield	Kremlin-Hillsdale	14,085	14,640	29,342	39,359	43,994	50,408	42,123	43,825	33,526	17,277	31,137	34,563
Garfield	Pioneer-Pleasant Vale	27,137	25,505	50,269	71,785	80,493	88,362	75,817	76,614	58,215	30,954	50,165	60,818
Garfield	Waukomis	16,039	15,138	30,344	46,995	58,525	66,917	61,543	62,846	47,829	24,749	42,723	45,761
Garvin	Elmore City-Pernell	311,248	210,058	273,734	305,144	188,712	237,108	304,806	430,280	355,007	349,656	740,674	339,518
Garvin	Lindsay	708,741	510,030	646,313	738,902	481,845	579,571	719,895	1,029,406	868,629	840,398	1,740,771	815,576
Garvin	Maysville	248,619	162,528	204,481	223,155	139,153	158,749	194,346	266,374	224,195	218,018	429,943	222,094
Garvin	Paoli	158,741	104,215	134,576	158,755	98,226	116,467	155,450	206,904	162,360	146,809	307,126	159,089
Garvin	Pauls Valley	792,965	544,340	707,136	789,607	506,609	622,294	763,632	1,152,781	923,224	861,709	1,780,982	865,231
Garvin	Stratford	381,492	280,373	364,983	418,404	273,360	331,737	410,904	552,256	456,298	439,005	906,181	443,350
Garvin	Wynnewood	407,717	286,582	383,988	427,803	270,458	328,047	408,925	581,970	492,269	474,737	982,656	463,744
Grady	Alex	114,230	84,161	125,507	164,361	141,042	182,420	308,923	420,005	337,911	334,382	674,573	277,329
Grady	Amber-Pocasset	161,380	137,234	195,029	257,155	223,193	274,681	478,022	646,633	533,724	518,470	1,030,721	429,486
Grady	Bridge Creek	470,411	401,159	586,042	753,462	681,203	871,120	1,552,787	2,083,555	1,748,174	1,784,256	3,961,724	1,442,348
Grady	Chickasha	835,769	686,697	990,323	1,254,293	1,109,739	1,379,966	2,302,247	2,955,046	2,283,497	2,228,880	4,618,502	1,980,919
Grady	Minco	194,639	165,978	231,409	307,952	268,206	328,151	577,413	773,932	600,672	580,554	1,210,832	504,510
Grady	Ninnekah	180,048	145,356	204,357	274,353	249,287	312,401	522,423	695,832	544,675	551,813	1,192,853	469,335

**Figure 25. (Cont.) Gross Production Tax Distributions to School Districts by County/District**

County	School District	FY2012	FY2013	FY2014	FY2015	FY2016	FY2017	FY2018	FY2019	FY2020	FY2021	FY2022	10-Yr Avg
Grady	Rush Springs	205,526	171,362	241,613	308,372	259,469	329,930	530,737	690,265	538,303	528,913	1,046,590	464,555
Grady	Tuttle	601,155	509,442	723,587	932,217	840,941	1,076,910	1,882,956	2,506,779	2,031,606	2,047,452	4,297,264	1,684,915
Grady	Verden	94,414	79,876	108,098	132,579	120,281	155,898	261,859	354,415	300,639	299,969	670,869	248,448
Grant	Deer Creek-Lamont	126,184	232,550	459,856	524,299	250,133	193,062	151,186	147,701	64,371	32,867	55,175	211,120
Grant	Medford	199,197	340,906	763,590	885,819	391,832	293,665	239,222	230,158	108,299	64,979	109,289	342,776
Grant	Pond Creek-Hunter	194,248	367,273	807,097	1,002,050	483,731	372,694	282,436	274,414	133,042	78,505	130,263	393,150
Grant	Wakita	0	0	0	0	0	0	0	0	0	0	0	0
Greer	Granite	462	549	502	397	287	235	596	666	224	104	323	388
Greer	Mangum	1,294	1,480	1,380	1,022	702	628	1,696	2,047	687	323	964	1,093
Harmon	Hollis	2,970	1,603	1,517	1,329	568	483	751	823	631	299	1,033	904
Harper	Buffalo	263,746	236,799	218,472	168,222	111,546	78,626	89,288	94,715	44,836	40,760	89,566	117,283
Harper	Laverne	438,364	394,191	349,875	261,142	192,847	141,286	151,520	155,799	69,655	66,603	139,336	192,225
Haskell	Keota	44,867	27,710	31,083	22,711	11,664	23,091	20,296	20,050	9,200	20,312	41,940	22,806
Haskell	Kinta	23,415	13,745	14,013	10,284	5,435	10,659	9,575	10,277	4,832	9,923	19,368	10,811
Haskell	Mccurtain	26,121	15,930	16,147	12,933	6,419	11,872	11,402	11,403	4,989	10,028	22,150	12,327
Haskell	Stigler	144,854	87,140	92,591	71,879	37,864	70,028	67,799	64,726	29,823	61,201	121,787	70,484
Haskell	Whitefield	0	0	0	0	0	0	0	0	0	0	0	0
Hughes	Calvin	112,195	55,983	59,590	51,500	56,255	68,879	89,685	139,655	98,542	98,132	251,854	97,007
Hughes	Dustin	54,401	22,930	0	0	0	0	0	0	0	0	0	2,293
Hughes	Holdenville	668,658	362,853	411,447	334,797	345,490	495,166	639,290	917,282	625,110	655,745	1,350,673	613,785
Hughes	Moss	174,118	88,231	96,582	83,802	95,286	123,466	165,728	246,609	168,369	166,101	357,458	159,163
Hughes	Stuart	158,391	93,591	100,834	81,758	92,757	125,699	155,785	238,326	159,517	165,698	307,590	152,155
Hughes	Wetumka	294,791	163,811	180,767	150,100	152,390	207,061	261,784	370,709	250,655	268,878	558,142	256,430
Jackson	Altus	32,779	27,415	94,148	81,518	47,582	25,741	32,221	26,019	18,624	5,561	13,701	37,253
Jackson	Blair	2,639	2,149	7,951	6,600	3,981	2,202	2,770	2,251	1,514	449	1,007	3,087
Jackson	Duke	1,599	1,447	5,090	4,193	2,655	1,376	1,717	1,368	885	295	791	1,982
Jackson	Eldorado	1,108	942	2,950	2,286	1,156	515	0	0	0	0	0	785
Jackson	Navajo	4,215	3,334	11,030	9,968	6,308	3,563	5,073	4,086	2,998	878	1,826	4,906
Jackson	Olustee	1,412	1,132	3,866	3,656	2,059	1,085	0	0	0	0	0	1,180
Jackson	Olustee-Eldorado	0	0	0	0	0	0	1,887	1,503	1,040	352	720	550
Jefferson	Ringling	97,678	71,334	99,723	49,315	8,532	13,272	15,826	19,583	19,533	18,369	22,653	33,814
Jefferson	Ryan	60,820	41,610	59,551	30,434	5,326	7,750	8,401	11,682	12,781	6,732	14,055	19,832
Jefferson	Terral	0	0	0	0	0	0	0	0	0	0	0	0
Jefferson	Waurika	99,803	67,308	97,156	44,609	8,162	12,609	14,927	20,789	22,844	12,124	27,084	32,761
Johnston	Coleman	28,019	22,021	33,126	38,893	35,986	26,328	27,414	32,699	47,525	24,075	55,528	34,359
Johnston	Milburn	26,670	19,794	31,318	40,572	32,960	29,984	32,179	40,901	59,635	28,688	70,084	38,612
Johnston	Mill Creek	20,696	14,417	22,376	30,113	28,557	24,456	28,148	31,857	48,714	24,054	55,228	30,792
Johnston	Tishomingo	123,776	93,984	153,210	196,523	173,114	138,244	154,309	174,769	261,663	131,288	284,563	176,167
Johnston	Wapanucka	31,158	22,425	38,355	48,739	44,426	36,788	42,568	49,186	75,031	36,010	78,424	47,195
Kay	Blackwell	163,044	116,178	162,131	182,009	140,975	83,808	75,062	70,089	42,160	20,574	47,435	94,042
Kay	Braman (Consolidated)	934	0	0	0	0	0	0	0	0	0	0	0
Kay	Newkirk	83,652	66,842	95,781	110,189	88,014	52,428	48,503	45,765	27,587	13,673	31,738	58,052
Kay	Ponca City	549,320	410,166	584,005	663,490	522,852	313,621	283,596	264,082	165,383	85,993	188,646	348,183
Kay	Tonkawa	82,668	59,634	81,882	91,477	73,602	44,633	43,591	42,135	27,118	14,589	33,599	51,226
Kingfisher	Cashion	182,506	126,148	166,555	268,318	261,753	595,211	1,346,823	1,993,197	2,061,411	1,248,454	2,586,283	1,065,415

**Figure 25. (Cont.) Gross Production Tax Distributions to School Districts by County/District**

County	School District	FY2012	FY2013	FY2014	FY2015	FY2016	FY2017	FY2018	FY2019	FY2020	FY2021	FY2022	10-Yr Avg
Kingfisher	Dover	77,474	57,611	66,091	100,722	92,382	197,970	401,227	573,785	553,458	296,680	655,674	299,560
Kingfisher	Hennessey	277,043	215,733	289,496	467,583	471,463	1,059,249	2,344,552	3,256,804	3,029,089	1,740,439	3,442,464	1,631,687
Kingfisher	Kingfisher	450,769	360,307	492,967	748,585	746,100	1,692,524	3,842,242	5,515,262	5,247,993	2,999,748	5,671,451	2,731,718
Kingfisher	Lomega	77,629	57,265	76,647	124,977	124,927	303,429	644,730	874,902	803,596	447,283	886,008	434,376
Kingfisher	Okarche	108,064	75,765	98,952	164,225	174,532	407,946	965,935	1,358,477	1,351,250	777,992	1,591,220	696,629
Kiowa	Hobart	32,495	17,677	16,665	12,770	10,259	9,696	14,118	9,500	5,095	4,706	13,600	11,409
Kiowa	Lone Wolf	3,858	1,776	1,678	1,462	1,025	1,462	2,143	1,299	606	677	2,171	1,430
Kiowa	Mountain View-Gotebo	9,402	5,609	5,340	3,917	3,069	2,987	4,247	2,811	1,597	1,547	4,618	3,574
Kiowa	Snyder	21,025	11,153	10,086	6,795	5,306	5,324	7,707	5,467	3,125	3,164	9,096	6,722
Latimer	Buffalo Valley	121,378	87,226	89,152	36,236	27,253	43,365	53,150	32,179	24,533	35,287	84,135	51,252
Latimer	Panola	169,070	115,658	105,506	40,727	27,785	46,504	52,074	24,354	17,590	0	0	43,020
Latimer	Red Oak	162,302	120,737	121,386	50,751	47,582	88,504	110,179	65,652	52,987	85,240	224,033	96,705
Latimer	Wilburton	681,959	478,896	457,291	184,100	161,015	274,187	304,412	187,616	137,130	225,277	553,439	296,336
Le Flore	Arkoma	13,127	9,193	11,082	6,831	3,379	7,391	8,320	6,435	3,400	5,263	11,778	7,307
Le Flore	Bokoshe	7,768	4,899	5,972	3,438	1,740	4,054	4,309	3,244	1,575	2,221	4,910	3,636
Le Flore	Cameron	12,980	7,563	8,646	5,347	2,300	5,062	6,059	4,486	2,501	3,777	7,685	5,343
Le Flore	Heavener	40,513	25,561	30,230	18,918	8,738	19,783	20,896	15,970	7,949	12,290	25,924	18,626
Le Flore	Howe	18,426	12,696	13,945	8,949	4,642	11,088	11,907	9,912	5,471	8,728	19,580	10,692
Le Flore	Le Flore	7,880	5,256	6,303	3,816	1,737	4,283	4,501	3,686	2,116	3,563	7,334	4,260
Le Flore	Panama	25,762	16,450	19,280	12,690	6,034	13,940	14,580	11,733	6,185	10,054	21,144	13,209
Le Flore	Pocola	30,834	20,859	22,695	14,416	6,677	15,644	17,252	13,917	6,848	10,429	21,979	15,072
Le Flore	Poteau	84,727	57,934	64,765	40,440	19,009	44,028	46,543	37,210	19,390	30,321	65,402	42,504
Le Flore	Spiro	43,783	29,405	33,171	19,833	9,078	20,684	21,800	17,056	8,971	14,099	31,254	20,535
Le Flore	Talihina	23,680	15,796	17,636	10,882	4,973	11,338	11,801	9,181	4,560	7,433	15,503	10,910
Le Flore	Whitesboro	6,824	4,931	5,460	3,577	1,691	3,768	4,396	3,730	1,831	2,682	6,138	3,821
Le Flore	Wister	20,846	13,750	15,696	10,213	4,812	10,339	10,937	7,893	4,023	6,524	14,026	9,821
Lincoln	Agra	68,513	50,941	65,977	40,937	37,648	38,360	46,860	43,361	22,092	14,482	33,325	39,398
Lincoln	Carney	33,629	25,171	34,082	20,223	20,310	27,103	36,131	32,854	17,469	11,619	23,351	24,832
Lincoln	Chandler	185,994	131,120	163,567	106,649	109,632	137,646	165,026	157,696	81,897	57,372	115,082	122,569
Lincoln	Davenport	59,089	41,044	51,718	35,511	34,878	43,975	52,554	50,849	28,545	20,475	37,688	39,724
Lincoln	Meeker	143,099	103,965	128,646	79,228	77,910	97,345	120,846	113,767	56,081	37,584	69,453	88,483
Lincoln	Prague	177,557	127,733	150,845	95,360	97,067	117,277	147,636	137,464	74,025	50,809	97,576	109,579
Lincoln	Stroud	140,608	102,203	123,814	76,792	74,634	93,978	109,829	105,292	55,680	39,130	83,033	86,438
Lincoln	Wellston	106,138	78,347	97,427	62,799	59,093	73,794	85,257	77,951	39,945	27,745	53,054	65,541
Lincoln	White Rock	0	0	0	0	0	0	0	0	0	0	0	0
Logan	Coyle	33,705	37,770	59,266	119,696	95,034	51,456	86,484	83,812	61,526	32,405	61,353	68,880
Logan	Crescent	61,119	72,099	114,783	273,145	205,781	100,785	155,483	138,761	105,747	57,831	126,758	135,117
Logan	Guthrie	325,805	376,658	614,402	1,435,606	1,092,243	556,215	870,018	820,419	632,553	359,018	652,332	740,946
Logan	Mulhall-Orlando	25,025	28,808	46,408	99,894	75,863	39,804	66,234	57,350	44,204	23,890	48,098	53,055
Love	Marietta	190,173	206,630	394,549	281,646	220,844	517,902	675,088	661,090	561,455	316,472	741,547	457,722
Love	Thackerville	59,015	58,431	111,673	81,298	67,638	167,833	208,471	187,077	139,217	76,936	188,188	128,676
Love	Turner	62,338	69,202	125,368	88,055	68,909	155,209	192,614	190,921	161,739	84,708	203,784	134,051
Major	Aline-Cleo	216,373	135,219	134,128	120,492	70,402	64,972	97,265	160,115	127,387	92,256	143,751	114,599
Major	Cimarron	388,563	253,553	266,260	222,166	121,740	108,944	157,386	294,220	249,846	181,693	251,109	210,692
Major	Fairview	861,333	565,298	658,658	573,755	334,344	298,354	483,074	887,226	757,049	560,492	934,987	605,324



**Figure 25. (Cont.) Gross Production Tax Distributions to School Districts by County/District**

County	School District	FY2012	FY2013	FY2014	FY2015	FY2016	FY2017	FY2018	FY2019	FY2020	FY2021	FY2022	10-Yr Avg
Major	Ringwood	526,230	335,964	367,432	324,741	187,268	169,741	265,214	434,390	365,710	265,912	467,958	318,433
Marshall	Kingston	176,114	263,576	273,594	317,545	218,028	160,901	200,622	248,639	118,928	120,296	312,015	223,414
Marshall	Madill	284,864	420,091	416,535	473,288	314,341	233,530	291,867	355,479	168,494	169,922	484,049	332,760
Mayes	Adair	1,295	212	332	225	117	827	780	794	587	216	536	463
Mayes	Chouteau-Mazie	1,138	179	272	188	98	689	640	634	477	165	415	376
Mayes	Locust Grove	1,985	317	489	311	156	1,129	1,021	1,029	752	268	698	617
Mayes	Pryor	3,246	565	849	554	292	2,110	1,912	1,985	1,499	546	1,387	1,170
Mayes	Salina	1,946	184	268	173	90	670	623	596	434	159	404	360
McClain	Blanchard	246,777	201,168	271,705	210,786	145,282	134,101	263,518	423,520	601,353	413,504	929,350	359,429
McClain	Dibble	97,919	78,409	104,431	78,215	50,616	44,461	83,597	139,573	203,011	141,214	315,265	123,879
McClain	Newcastle	243,371	194,501	272,906	216,787	150,447	144,360	284,772	454,634	656,084	474,756	1,102,890	395,214
McClain	Purcell	208,964	165,762	217,756	163,654	107,054	98,476	187,592	291,964	411,472	286,972	656,275	258,698
McClain	Washington	136,321	108,283	144,336	111,270	75,517	70,146	136,400	222,307	313,300	212,440	495,603	188,960
McClain	Wayne	74,650	58,270	76,030	60,577	40,886	36,597	69,157	111,194	142,813	96,431	210,728	90,268
McCurtain	Battiest	0	0	0	0	0	0	0	0	0	0	0	0
McCurtain	Broken Bow	0	0	0	0	0	0	0	0	0	0	0	0
McCurtain	Eagletown	0	0	0	0	0	0	0	0	0	0	0	0
McCurtain	Haworth	0	0	0	0	0	0	0	0	0	0	0	0
McCurtain	Idabel	0	0	0	0	0	0	0	0	0	0	0	0
McCurtain	Smithville	0	0	0	0	0	0	0	0	0	0	0	0
McCurtain	Valliant	0	0	0	0	0	0	0	0	0	0	0	0
McCurtain	Wright City	0	0	0	0	0	0	0	0	0	0	0	0
McIntosh	Checotah	38,889	20,013	17,879	13,587	7,673	13,184	11,511	10,668	8,140	80,666	150,674	33,399
McIntosh	Eufaula	33,095	15,663	13,885	10,526	5,940	10,036	9,049	8,501	6,628	67,323	126,110	27,366
McIntosh	Hanna	6,542	3,669	3,203	2,025	521	899	703	672	472	4,086	8,385	2,463
McIntosh	Midway	5,876	2,856	2,693	2,247	1,084	2,064	1,822	1,703	1,265	13,030	26,242	5,501
Murray	Davis	65,988	65,433	59,522	40,823	17,337	20,461	26,217	31,362	19,022	10,036	17,565	30,778
Murray	Sulphur	89,762	88,817	82,747	57,555	25,293	29,859	34,670	46,615	29,578	16,587	29,179	44,090
Muskogee	Boynton-Moton	0	0	0	0	0	0	0	0	0	0	0	0
Muskogee	Braggs	438	483	457	359	137	206	293	186	134	70	115	244
Muskogee	Fort Gibson	3,881	4,580	4,559	3,786	1,411	2,079	2,993	2,231	1,593	783	1,704	2,572
Muskogee	Haskell	1,890	2,165	2,121	1,694	609	928	1,381	999	674	321	673	1,157
Muskogee	Hilldale	3,796	4,449	4,457	3,729	1,409	2,107	3,031	2,224	1,626	862	1,868	2,576
Muskogee	Muskogee	13,213	15,222	15,130	11,665	4,526	7,438	9,129	7,463	3,945	2,409	4,889	8,182
Muskogee	Oktaha	1,552	1,835	1,916	1,543	570	821	1,227	919	637	299	647	1,042
Muskogee	Porum	1,088	1,207	1,185	984	376	567	805	602	416	193	435	677
Muskogee	Warner	1,539	1,801	1,768	1,483	574	890	1,321	1,005	742	355	778	1,072
Muskogee	Webbers Falls	593	702	694	536	199	321	441	354	254	131	273	390
Noble	Billings	31,498	20,783	33,490	35,229	26,629	13,633	16,429	12,951	10,569	5,714	13,354	18,878
Noble	Frontier	107,428	85,328	167,782	200,069	154,068	68,493	82,362	69,739	56,651	29,430	63,306	97,723
Noble	Morrison	181,439	144,211	262,735	304,506	219,029	102,978	133,738	119,037	93,065	47,834	108,217	153,535
Noble	Perry	379,548	291,048	546,952	642,166	478,528	206,063	251,229	212,157	171,563	85,733	178,249	306,369
Nowata	Nowata	93,089	56,113	76,943	30,518	25,273	32,490	25,943	23,620	15,190	9,604	13,803	30,950
Nowata	Oklahoma Union	62,904	37,127	53,583	20,961	18,237	23,399	19,592	18,701	12,905	7,651	11,840	22,400
Nowata	South Coffeyville	26,222	15,080	20,930	8,899	7,119	9,434	7,570	6,667	4,513	2,849	4,349	8,741

**Figure 25. (Cont.) Gross Production Tax Distributions to School Districts by County/District**

County	School District	FY2012	FY2013	FY2014	FY2015	FY2016	FY2017	FY2018	FY2019	FY2020	FY2021	FY2022	10-Yr Avg
Okfuskee	Boley	0	0	0	0	0	0	0	0	0	0	0	0
Okfuskee	Graham	19,241	122,011	0	0	0	0	0	0	0	0	0	12,201
Okfuskee	Graham-Dustin	0	0	160,465	173,153	23,241	16,410	17,096	16,686	11,839	11,694	23,784	45,437
Okfuskee	Mason	19,136	19,717	20,653	17,645	23,854	24,321	25,252	24,603	18,022	17,711	33,886	22,566
Okfuskee	Okemah	80,633	71,577	63,900	54,592	76,810	73,956	76,148	73,911	54,088	53,426	97,097	69,551
Okfuskee	Paden	21,661	19,752	18,931	16,780	21,521	22,660	24,015	22,768	16,732	15,908	32,559	21,163
Okfuskee	Weleetka	37,678	34,380	29,514	26,090	36,488	36,795	38,819	37,805	29,394	29,551	56,343	35,518
Oklahoma	Bethany	18,217	21,912	17,686	16,876	9,776	10,434	11,852	11,394	8,329	7,184	21,387	13,683
Oklahoma	Choctaw-Nicoma Park	56,239	77,766	78,471	76,110	32,888	33,552	38,722	37,186	26,920	23,355	65,659	49,063
Oklahoma	Crooked Oak	11,774	14,126	11,882	11,013	6,511	7,413	8,084	7,565	5,497	4,880	13,359	9,033
Oklahoma	Deer Creek	41,375	55,684	48,302	50,075	30,776	34,440	40,721	40,987	31,998	28,866	86,456	44,830
Oklahoma	Edmond	236,684	287,168	236,422	226,758	133,152	144,365	166,821	162,513	120,868	106,506	297,001	188,157
Oklahoma	Harrah	24,628	28,218	22,504	20,712	11,815	12,773	14,976	14,811	10,785	9,355	24,035	16,998
Oklahoma	Jones	12,898	15,248	12,025	11,218	6,285	6,789	7,773	7,280	5,275	4,648	12,841	8,938
Oklahoma	Luther	9,685	11,116	9,228	9,179	5,267	5,241	5,378	5,307	3,822	3,260	9,293	6,709
Oklahoma	Midwest City-Del City	160,774	188,441	152,195	141,847	82,279	86,264	96,208	91,342	65,914	57,307	134,175	109,597
Oklahoma	Millwood	11,654	13,605	9,447	10,032	5,577	5,401	5,866	5,504	4,474	3,938	10,831	7,467
Oklahoma	Oklahoma City	521,416	505,764	461,756	444,176	260,004	278,520	314,769	325,529	250,419	223,803	349,159	341,390
Oklahoma	Putnam City	206,784	246,295	200,119	189,167	108,953	115,377	131,286	125,261	90,827	79,711	214,725	150,172
Oklahoma	Western Heights	39,240	47,542	38,222	36,154	21,041	21,835	23,397	21,404	15,214	13,201	27,317	26,533
Okmulgee	Beggs	29,609	31,398	31,682	29,962	14,655	15,049	18,932	20,880	14,512	6,749	13,016	19,684
Okmulgee	Dewar	10,673	11,218	11,445	10,026	5,065	5,448	7,136	7,923	5,996	2,997	5,646	7,290
Okmulgee	Henryetta	31,005	32,962	32,986	32,183	15,455	16,337	20,859	23,099	16,258	7,880	13,953	21,197
Okmulgee	Morris	24,263	26,660	27,266	27,237	13,273	14,063	18,270	20,727	13,749	6,630	12,733	18,061
Okmulgee	Okmulgee	39,636	39,922	40,350	38,795	18,937	19,754	24,568	25,737	17,289	8,054	14,892	24,830
Okmulgee	Preston	14,809	15,330	14,237	13,335	7,184	7,914	9,545	10,827	7,683	3,923	8,237	9,822
Okmulgee	Schulter	4,317	4,872	4,507	3,669	1,768	1,880	2,283	2,839	2,008	884	1,819	2,653
Okmulgee	Wilson	6,533	6,781	7,045	5,931	2,854	3,041	4,201	4,523	3,193	1,690	3,420	4,268
Osage	Bamsdall	285,783	161,104	217,162	114,767	62,908	106,329	106,448	144,329	94,865	52,956	115,450	117,632
Osage	Hominy	332,405	227,620	297,738	148,645	84,802	145,934	151,644	208,081	130,551	79,122	176,538	165,067
Osage	Pawhuska	604,651	422,032	560,251	343,685	196,425	231,061	235,096	292,334	188,770	119,578	264,301	285,353
Osage	Prue	201,565	151,141	189,180	127,423	75,444	90,597	98,140	129,435	78,363	47,874	114,574	110,217
Osage	Shidler	142,850	89,923	126,522	59,375	36,181	58,733	62,892	87,293	51,365	31,313	60,744	66,434
Osage	Woodland	231,918	158,850	217,252	104,489	63,576	109,423	111,215	145,568	103,444	54,876	123,513	119,221
Osage	Wynona	123,018	107,486	66,810	28,858	17,069	28,917	31,243	39,398	23,497	12,472	30,376	38,612
Pawnee	Cleveland	183,321	206,169	302,307	247,373	113,796	120,355	114,047	165,081	106,613	52,737	117,981	154,646
Pawnee	Pawnee	77,757	86,287	133,516	118,382	52,922	52,744	48,583	68,703	44,354	21,615	45,037	67,214
Payne	Cushing	59,922	76,045	128,886	266,698	203,117	129,247	170,887	130,397	85,891	35,286	59,465	128,592
Payne	Glencoe	11,047	13,822	24,298	50,519	38,892	25,531	31,131	24,307	17,293	6,881	12,955	24,563
Payne	Perkins-Tryon	48,676	60,270	104,856	215,874	168,895	108,477	141,793	109,137	72,813	30,919	61,955	107,499
Payne	Ripley	16,649	20,382	33,866	68,406	51,942	33,622	43,850	33,950	22,167	8,986	16,659	33,383
Payne	Stillwater	193,671	246,697	424,725	888,725	691,259	443,097	580,933	449,021	296,965	124,901	219,525	436,585
Payne	Yale	17,106	19,564	33,317	68,918	49,735	30,521	39,591	29,464	19,739	8,271	14,138	31,326
Pittsburg	Canadian	128,285	104,520	140,335	116,058	73,653	100,101	126,906	109,050	67,517	84,858	140,919	106,392
Pittsburg	Crowder	135,231	116,794	149,626	116,098	75,741	102,740	105,633	85,885	54,845	57,552	100,936	96,585

**Figure 25. (Cont.) Gross Production Tax Distributions to School Districts by County/District**

County	School District	FY2012	FY2013	FY2014	FY2015	FY2016	FY2017	FY2018	FY2019	FY2020	FY2021	FY2022	10-Yr Avg
Pittsburg	Haileyville	118,771	94,632	115,149	88,315	58,423	76,628	75,928	61,787	44,331	54,838	99,023	76,905
Pittsburg	Hartshorne	234,424	204,050	231,041	183,839	127,482	168,769	191,361	159,050	108,722	133,410	236,617	174,434
Pittsburg	Indianola	73,097	57,435	70,925	56,948	35,689	48,196	55,983	49,622	38,109	47,253	82,888	54,305
Pittsburg	Kiowa	81,603	68,421	98,078	76,307	50,106	68,195	76,899	61,235	43,174	51,445	92,615	68,647
Pittsburg	Krebs	362	0	0	0	0	0	0	0	0	0	0	0
Pittsburg	McAlester	828,020	724,479	919,802	720,558	490,927	653,650	719,190	609,607	423,476	537,557	946,758	674,600
Pittsburg	Pittsburg	74,182	40,581	43,704	34,753	22,856	34,208	35,370	29,849	20,436	26,395	66,924	35,508
Pittsburg	Quinton	157,084	140,336	170,794	122,494	77,463	103,202	115,508	89,002	60,180	73,355	132,242	108,458
Pittsburg	Savanna	114,472	93,946	109,411	95,572	61,437	80,068	93,304	81,526	56,827	66,543	123,383	86,202
Pontotoc	Ada	200,513	680,106	491,473	516,053	263,491	187,949	242,690	261,697	213,457	96,676	227,292	318,088
Pontotoc	Allen	33,078	110,470	83,911	89,809	47,197	35,514	47,623	51,338	43,657	18,660	43,929	57,211
Pontotoc	Byng	132,142	450,435	334,591	343,957	173,070	127,207	165,924	184,169	152,751	67,136	159,961	215,920
Pontotoc	Latta	54,986	203,009	159,167	172,171	83,956	62,227	79,614	91,013	77,111	38,350	83,432	105,005
Pontotoc	Roff	25,468	83,381	63,844	69,445	33,685	23,129	30,078	32,368	27,336	12,096	26,227	40,159
Pontotoc	Stonewall	32,787	108,493	81,360	85,796	44,902	34,312	43,216	45,312	37,404	17,104	40,269	53,817
Pontotoc	Vanoss	47,025	144,721	99,522	101,627	52,172	39,598	51,779	57,888	48,375	20,663	47,384	66,373
Pottawatomie	Asher	11,494	19,661	16,629	17,699	9,399	6,472	9,253	9,762	8,207	4,112	8,285	10,948
Pottawatomie	Bethel	61,658	109,336	90,423	87,672	47,316	34,342	44,562	42,275	34,950	17,686	36,515	54,508
Pottawatomie	Dale	31,201	55,356	46,668	47,630	26,666	19,640	26,397	27,480	22,881	11,704	24,625	30,905
Pottawatomie	Earlsboro	11,212	18,107	15,036	15,033	8,516	6,399	8,948	9,204	7,633	4,054	8,224	10,115
Pottawatomie	Macomb	17,148	29,412	21,598	21,109	10,235	7,309	9,001	9,047	7,834	3,870	7,707	12,712
Pottawatomie	Maud	13,371	25,674	21,131	21,661	11,700	8,092	10,098	10,526	7,918	3,779	8,051	12,863
Pottawatomie	Mcloud	80,386	145,774	117,946	120,106	64,963	46,597	59,310	57,709	48,594	24,545	48,295	73,384
Pottawatomie	North Rock Creek	0	0	0	0	0	0	0	0	0	0	34,143	3,414
Pottawatomie	Shawnee	177,946	320,307	262,922	264,274	138,925	96,401	127,342	128,344	105,581	52,389	106,786	160,327
Pottawatomie	Tecumseh	100,094	175,304	143,326	148,736	79,734	55,949	71,728	70,959	59,296	30,825	61,060	89,692
Pottawatomie	Wanette	10,390	16,735	13,719	13,566	6,638	4,468	5,115	4,981	4,224	1,997	3,959	7,540
Pushmataha	Antlers	16,121	25,173	20,366	21,851	9,948	12,923	19,573	19,444	8,969	6,934	24,722	16,990
Pushmataha	Clayton	4,042	7,773	6,237	6,580	2,848	3,858	6,016	6,079	2,794	2,106	6,682	5,097
Pushmataha	Moyers	2,753	4,685	3,859	4,545	2,069	2,728	3,619	3,553	1,553	1,221	4,250	3,208
Pushmataha	Rattan	8,104	12,838	10,296	10,717	4,818	6,545	9,956	9,946	4,550	3,384	12,002	8,505
Roger Mills	Cheyenne	825,803	860,609	1,280,806	1,539,143	918,218	749,671	800,589	811,244	433,510	290,514	586,506	827,081
Roger Mills	Hammon	654,410	684,145	1,005,491	1,129,816	658,432	515,712	545,010	545,848	293,238	209,400	426,598	601,369
Roger Mills	Leedey	552,997	562,917	835,085	891,961	555,625	483,859	481,175	529,353	288,663	175,916	377,318	518,187
Roger Mills	Reydon	361,051	403,284	511,374	540,407	352,443	258,787	255,047	295,217	145,612	96,708	216,857	307,574
Roger Mills	Sweetwater	224,789	267,581	404,559	549,469	323,729	287,062	301,492	291,312	147,925	105,334	229,747	290,821
Rogers	Catoosa	5,861	3,669	4,876	2,233	1,455	1,770	1,719	1,660	828	567	923	1,970
Rogers	Chelsea	2,677	1,555	2,155	989	629	785	721	688	346	235	391	849
Rogers	Claremore	11,073	6,726	9,245	4,265	2,806	3,410	3,267	3,167	1,615	1,128	1,950	3,758
Rogers	Foyil	1,760	1,043	1,402	607	384	447	435	420	203	139	233	531
Rogers	Inola	3,662	2,171	3,021	1,480	968	1,172	1,149	1,105	548	384	627	1,263
Rogers	Justus-Tiawah	0	0	0	0	0	0	0	0	0	0	0	0
Rogers	Oologah-Talala	5,026	3,029	4,138	1,932	1,256	1,538	1,483	1,460	759	535	858	1,699
Rogers	Sequoyah	3,768	2,251	3,008	1,451	950	1,164	1,143	1,114	560	390	643	1,267
Rogers	Verdigris	3,388	2,036	2,787	1,306	870	1,085	1,087	1,111	606	419	694	1,200

**Figure 25. (Cont.) Gross Production Tax Distributions to School Districts by County/District**

County	School District	FY2012	FY2013	FY2014	FY2015	FY2016	FY2017	FY2018	FY2019	FY2020	FY2021	FY2022	10-Yr Avg
Seminole	Bowlegs	63,447	97,366	81,714	65,549	44,580	39,623	44,697	45,395	33,089	17,431	40,828	51,027
Seminole	Butner	40,018	65,947	64,189	56,312	37,109	34,860	42,299	38,177	30,967	18,584	31,522	41,997
Seminole	Konawa	155,680	220,464	207,594	167,500	110,562	102,335	113,770	111,236	84,895	47,184	94,051	125,959
Seminole	New Lima	56,973	87,343	78,741	66,542	45,126	43,308	50,527	50,734	40,382	20,863	40,272	52,384
Seminole	Sasakwa	49,629	74,557	62,123	47,880	34,061	30,998	32,172	31,203	26,185	17,401	34,373	39,095
Seminole	Seminole	362,977	575,169	530,700	414,347	275,209	251,197	277,682	274,135	216,349	121,216	231,782	316,779
Seminole	Strother	78,042	119,999	117,297	104,202	66,069	61,659	72,411	72,121	58,115	32,688	66,896	77,146
Seminole	Varnum	51,987	95,204	85,655	68,403	46,075	41,683	49,335	52,605	42,043	23,540	59,713	56,426
Seminole	Wewoka	142,395	229,073	225,701	180,517	120,583	99,678	115,025	113,107	85,462	52,165	109,705	133,102
Sequoyah	Central	4,362	1,457	1,240	904	797	1,196	985	915	411	628	1,621	1,015
Sequoyah	Gans	2,057	1,120	909	658	638	1,023	854	781	346	510	1,332	817
Sequoyah	Gore	2,370	1,455	1,236	857	718	1,063	958	972	419	652	1,801	1,013
Sequoyah	Muldrow	8,195	4,596	3,795	2,681	2,323	3,584	2,854	2,716	1,177	1,704	4,432	2,986
Sequoyah	Roland	5,610	3,164	2,666	1,852	1,617	2,425	1,901	1,752	767	1,155	2,883	2,018
Sequoyah	Sallisaw	10,026	5,665	4,750	3,386	2,956	4,644	3,783	3,648	1,593	2,365	6,319	3,911
Sequoyah	Vian	4,900	2,796	2,403	1,658	1,542	2,265	1,795	1,765	750	1,099	2,861	1,893
Stephens	Bray-Doyle	183,539	119,889	156,110	213,250	176,828	173,738	216,322	240,612	131,173	101,169	245,547	177,464
Stephens	Central High	187,620	119,674	189,461	234,842	208,931	195,648	246,245	298,627	181,139	135,906	362,410	217,288
Stephens	Comanche	496,410	315,998	485,139	564,310	507,713	490,283	638,833	719,057	407,709	304,075	818,948	525,207
Stephens	Duncan	1,711,106	1,093,600	1,668,919	1,985,018	1,765,284	1,715,726	2,158,124	2,544,483	1,468,484	1,141,806	2,916,820	1,845,826
Stephens	Empire	223,959	141,662	213,696	262,358	229,150	238,955	331,899	404,994	227,521	175,361	477,725	270,332
Stephens	Marlow	596,588	394,593	603,179	732,763	689,413	676,076	874,547	1,076,076	621,699	449,567	1,177,816	729,573
Stephens	Velma-Alma	196,546	122,463	191,885	240,122	228,840	227,284	283,750	330,615	199,128	151,827	395,068	237,098
Texas	Goodwell	113,677	87,359	77,766	52,241	36,357	60,290	59,052	66,058	35,324	22,295	50,630	54,737
Texas	Guymon	1,568,303	1,225,257	1,021,596	682,685	425,328	750,968	749,849	809,912	444,657	289,560	678,515	707,833
Texas	Hardesty	47,179	34,258	29,288	22,109	14,184	22,685	23,690	25,512	11,478	7,331	18,400	20,893
Texas	Hooker	318,476	252,815	225,939	152,514	96,259	172,801	167,143	177,555	94,766	60,198	143,713	154,370
Texas	Texhoma	155,966	132,719	103,708	66,990	41,918	64,656	63,623	66,129	35,846	23,558	55,597	65,474
Texas	Tyrone	138,434	109,956	94,889	61,269	36,554	60,601	58,170	58,649	31,327	20,825	49,922	58,216
Texas	Yarbrough	67,739	61,170	46,716	31,833	18,820	30,718	31,991	28,024	14,857	7,744	21,919	29,379
Tillman	Davidson	8,063	5,396	12,774	9,344	2,797	1,676	0	0	0	0	0	3,199
Tillman	Frederick	60,306	46,641	126,536	102,917	34,061	22,790	27,133	41,258	25,362	10,736	27,304	46,474
Tillman	Grandfield	18,652	14,018	37,503	30,566	9,755	6,413	7,293	9,409	6,264	2,673	6,953	13,085
Tillman	Tipton	25,588	19,844	51,197	39,614	12,822	7,416	8,859	13,727	8,337	3,333	7,992	17,314
Tulsa	Berryhill	1,463	2,002	1,583	1,333	722	711	763	924	672	339	815	986
Tulsa	Bixby	5,978	8,384	6,776	5,867	3,304	3,413	3,824	4,778	3,689	1,923	4,711	4,667
Tulsa	Broken Arrow	20,034	27,650	21,250	18,512	10,295	10,423	11,556	14,004	10,487	5,559	13,265	14,300
Tulsa	Collinsville	3,215	4,367	3,310	2,727	1,518	1,518	1,723	2,085	1,569	827	2,071	2,171
Tulsa	Glenpool	2,855	3,912	2,996	2,602	1,464	1,514	1,670	2,047	1,539	806	1,893	2,044
Tulsa	Jenks	12,152	17,429	13,534	11,451	6,391	6,500	7,345	9,158	6,900	3,597	8,674	9,098
Tulsa	Liberty	720	996	725	589	317	308	340	401	291	146	341	445
Tulsa	Owasso	11,032	15,241	11,745	9,682	5,454	5,444	6,045	7,311	5,387	2,825	6,619	7,575
Tulsa	Sand Springs	6,109	8,516	6,530	5,442	2,948	2,900	3,153	3,798	2,796	1,437	3,505	4,102
Tulsa	Skiatook	3,051	4,173	3,165	2,598	1,426	1,414	1,545	1,872	1,341	675	1,600	1,981
Tulsa	Sperry	831,544	667,699	803,536	289,633	175,826	293,727	301,007	400,984	240,361	139,926	319,278	363,198

**Figure 25. (Cont.) Gross Production Tax Distributions to School Districts by County/District**

County	School District	FY2012	FY2013	FY2014	FY2015	FY2016	FY2017	FY2018	FY2019	FY2020	FY2021	FY2022	10-Yr Avg
Tulsa	Tulsa	48,929	66,321	50,539	42,071	22,990	22,747	24,866	29,485	21,672	11,005	20,495	31,219
Tulsa	Union	17,877	24,372	18,878	15,947	8,774	8,878	9,672	11,718	8,637	4,463	10,569	12,191
Wagoner	Coweta	16,939	11,904	15,311	16,978	9,086	6,944	6,506	6,848	3,476	1,201	1,545	7,980
Wagoner	Okay	2,369	1,667	1,953	2,057	1,121	852	842	770	381	132	165	994
Wagoner	Porter Consolidated	2,960	2,064	2,735	2,984	1,517	1,175	1,066	1,066	563	208	255	1,363
Wagoner	Wagoner	12,948	8,658	11,088	12,252	6,385	4,982	4,728	4,904	2,451	811	991	5,725
Washington	Bartlesville	192,502	101,727	125,391	47,435	36,354	58,837	55,614	66,828	39,702	22,249	43,005	59,714
Washington	Caney Valley	24,877	12,998	16,333	5,983	4,635	7,582	7,431	9,241	5,500	3,112	5,622	7,844
Washington	Copan	9,154	4,561	14,420	7,060	2,283	2,378	2,240	2,614	1,497	776	1,557	3,939
Washington	Dewey	39,113	20,899	26,953	9,931	7,532	12,102	11,303	13,988	8,272	4,629	8,695	12,430
Washita	Burns Flat-Dill City	1,878,492	897,058	836,684	758,414	385,820	299,451	303,554	255,284	139,234	155,892	276,365	430,775
Washita	Canute	1,232,722	582,364	541,036	502,299	256,061	215,259	225,734	178,539	93,303	96,037	197,682	288,832
Washita	Cordell	2,213,411	985,186	923,997	875,767	427,991	360,969	367,808	289,458	163,117	181,538	343,655	491,949
Washita	Sentinel	945,357	426,241	428,398	390,703	196,625	168,497	166,286	134,170	77,760	83,918	166,995	223,959
Washita	Washita Heights	0	0	0	0	0	0	0	0	0	0	0	0
Woods	Alva	1,942,963	1,271,109	2,572,076	3,735,639	2,030,610	2,349,039	2,356,914	2,065,073	1,069,820	573,154	1,303,452	1,932,689
Woods	Freedom	168,171	102,734	201,513	326,085	174,265	187,275	169,465	150,268	67,919	26,200	55,224	146,095
Woods	Waynoka	486,134	350,980	686,945	1,058,644	584,018	627,672	568,568	465,073	239,258	123,808	262,968	496,793
Woodward	Fort Supply	31,942	18,599	14,843	14,925	10,145	9,797	14,756	21,130	13,976	7,281	11,296	13,675
Woodward	Mooreland	131,452	76,561	62,738	66,729	38,971	36,585	58,238	88,075	57,972	30,022	50,928	56,682
Woodward	Sharon-Mutual	71,687	44,423	37,872	37,847	22,544	20,810	31,754	43,953	28,895	12,374	16,800	29,727
Woodward	Woodward	650,998	405,959	344,573	372,161	226,150	197,570	307,725	455,950	290,992	141,753	222,960	296,579
<b>All Counties</b>	<b>All Districts</b>	<b>\$72,663,646</b>	<b>\$60,498,956</b>	<b>\$79,735,839</b>	<b>\$83,877,100</b>	<b>\$56,880,656</b>	<b>\$60,535,813</b>	<b>\$81,606,568</b>	<b>\$103,601,375</b>	<b>\$77,662,782</b>	<b>\$57,603,655</b>	<b>\$116,191,816</b>	<b>\$77,819,456</b>

Source: Oklahoma State Department of Education – Oklahoma Cost Accounting System. Available online at: [https://sdeweb01.sde.ok.gov/OCAS\\_Reporting/StateReports.aspx](https://sdeweb01.sde.ok.gov/OCAS_Reporting/StateReports.aspx)

Note: Total severance tax payments to school districts reported by the Oklahoma State Dept. of Education is \$7.365 million less than the amount reported by the Oklahoma Tax Commission for FY2022.



**Figure 26. Oklahoma Mining Industry Establishments, Employment, and Wages by County**

Region	Number of Mining Establishments			Mining Wage & Salary Employment			Total Mining Wage & Salary Earnings			Average Annual Wage per Mining Wage and Salary Worker			Average Annual Wage per Worker in Non-Mining Sectors		
	2020	2021	2022*	2020	2021	2022*	2020	2021	2022*	2020	2021	2022*	2020	2021	2022*
State of Oklahoma	3,259	3,055	2,907	31,384	27,336	29,699	\$3,285,520,957	\$2,948,402,319	\$3,410,151,600	\$104,687	\$107,858	\$114,825	\$48,338	\$50,288	\$51,825
Adair County	4	6	5	35	65	54	2,327,156	4,041,925	4,077,525	65,956	62,093	75,326	34,785	37,118	38,714
Alfalfa County	8	4	4	31	5	5	2,023,917	173,365	173,593	65,757	38,088	33,568	43,060	44,304	46,500
Atoka County	8	5	4	53	47	45	3,740,417	3,101,173	2,806,263	69,921	66,656	63,040	32,572	34,473	36,588
Beaver County	23	24	23	157	149	125	8,248,352	7,851,360	6,664,534	52,676	52,529	53,405	40,467	41,439	42,541
Beckham County	99	91	84	1,121	835	1,920	87,714,706	72,818,961	129,666,292	78,225	87,248	67,521	41,061	42,404	42,490
Blaine County	27	23	19	182	169	180	14,361,775	13,707,771	16,650,885	79,111	80,970	92,381	39,654	41,779	41,439
Bryan County	6	6	6	28	32	30	1,331,648	1,586,766	1,788,537	47,587	49,603	59,555	42,783	46,032	47,504
Caddo County	32	29	24	148	141	117	8,369,032	9,673,003	8,903,496	56,728	68,422	76,375	42,615	43,697	45,298
Canadian County	155	134	130	1,326	991	1,378	113,597,936	90,138,696	139,602,481	85,674	90,930	101,324	42,025	43,217	44,247
Carter County	116	110	107	997	941	937	64,126,676	64,013,208	67,952,348	64,320	68,034	72,542	44,218	45,851	47,921
Cherokee County	2	3	4	15	36	48	715,885	1,968,597	2,732,651	49,296	54,047	56,564	40,356	43,315	44,687
Choctaw County	7	7	4	126	93	78	7,165,899	6,620,795	5,560,137	56,727	70,987	70,841	34,044	36,797	37,767
Cimarron County	3	3	3	31	25	25	2,918,318	2,664,891	2,902,872	95,445	105,729	113,982	34,675	37,130	33,993
Cleveland County	92	87	87	233	256	320	15,398,659	18,073,501	24,895,830	65,955	70,502	77,731	43,747	44,648	47,074
Coal County	6	5	4	44	24	32	2,226,623	1,507,134	1,673,656	50,457	62,160	52,849	35,606	36,603	35,964
Comanche County	1	3	7	4	26	117	183,150	2,274,231	4,098,101	44,609	88,825	34,942	42,727	44,435	46,570
Cotton County	3	4	4	5	9	11	210,527	373,692	565,627	43,979	40,968	49,923	33,651	39,348	49,424
Craig County	10	9	6	48	37	36	2,457,767	2,256,993	2,482,115	51,163	61,615	68,833	37,710	40,099	40,609
Creek County	71	64	60	393	375	375	24,544,174	22,578,356	24,576,232	62,379	60,263	65,452	45,273	46,758	48,692
Custer County	63	61	56	730	680	704	64,937,470	62,680,252	84,873,663	88,997	92,122	120,618	42,435	43,763	43,027
Delaware County	2	2	1	7	7	5	183,521	200,103	175,732	25,699	28,221	37,533	35,080	36,093	38,361
Dewey County	17	20	22	306	363	517	22,915,959	30,810,273	46,773,634	74,805	84,946	90,452	42,789	40,871	47,481
Ellis County	5	5	5	21	37	35	1,485,373	2,238,067	2,221,422	72,002	60,063	63,156	38,806	40,507	41,384
Garfield County	64	65	63	719	584	680	43,763,113	35,579,999	41,747,165	60,833	60,905	61,367	42,538	45,123	48,009
Garvin County	81	73	70	654	608	588	41,088,982	45,777,152	41,198,795	62,826	75,256	70,090	47,161	49,167	51,563
Grady County	51	49	45	604	469	737	47,402,466	39,084,983	63,074,317	78,442	83,311	85,627	38,834	41,567	41,995
Grant County	20	16	15	135	129	151	8,124,457	8,480,080	10,694,021	60,334	65,607	70,676	49,244	46,721	51,407
Greer County	2	2	1	7	5	6	118,681	101,779	95,036	17,728	19,890	16,914	34,386	35,076	36,431
Harmon County	0	0	0	0	0	0	0	0	0	0	0	0	0	0	0
Harper County	5	4	5	34	30	53	2,104,041	1,895,205	3,372,017	61,378	63,678	63,042	37,557	38,005	39,892
Haskell County	25	24	24	187	208	231	8,255,551	11,338,652	13,938,897	44,241	54,405	60,312	31,332	33,742	36,511
Hughes County	14	10	10	70	51	78	3,047,935	2,001,917	3,698,442	43,469	39,333	47,272	33,071	34,041	35,239
Jackson County	7	4	5	12	5	8	513,199	200,100	506,361	41,820	43,018	60,841	43,885	45,773	47,372
Jefferson County	4	4	4	12	12	9	353,397	316,818	273,613	29,934	26,847	30,067	34,915	32,960	35,057
Johnston County	13	12	11	190	187	185	12,230,827	12,369,030	13,531,036	64,294	66,050	73,277	35,982	38,368	41,651
Kay County	32	27	26	229	238	277	14,142,812	15,912,526	20,301,019	61,667	66,816	73,169	44,539	45,924	46,877
Kingfisher County	97	90	84	668	629	725	46,217,026	43,165,450	56,748,241	69,159	68,626	78,281	46,923	47,609	49,417
Kiowa County	7	7	7	89	94	95	5,087,809	5,277,707	5,582,400	57,023	55,908	58,596	35,919	36,503	37,803
Latimer County	10	11	10	58	39	26	7,477,548	4,165,832	4,104,456	129,456	106,024	159,131	38,009	40,361	41,552
Le Flore County	35	33	28	321	290	332	15,682,073	15,248,150	14,441,980	48,856	52,592	43,484	38,678	40,927	43,225
Lincoln County	22	21	18	193	140	175	9,290,818	6,529,817	8,754,644	48,021	46,702	50,034	41,514	44,224	45,659

**Figure 26. (Cont.) Oklahoma Mining Industry Establishments, Employment, and Wages by County**

Region	Number of Establishments			Wage & Salary Employment			Total Wage & Salary Earnings			Average Annual Wage per Mining Wage and Salary Worker			Average Annual Wage per Worker in Non-Mining Sectors		
	2020	2021	2022*	2020	2021	2022*	2020	2021	2022*	2020	2021	2022*	2020	2021	2022*
Logan County	29	27	25	133	116	130	7,099,288	6,028,362	7,960,891	53,483	51,828	61,159	37,211	39,344	40,892
Love County	9	7	6	89	36	20	4,367,669	2,408,656	1,450,678	49,007	67,748	71,525	38,535	41,289	43,498
Major County	22	24	28	250	281	324	27,097,928	21,965,955	30,660,161	108,179	78,085	94,638	38,492	40,362	41,603
Marshall County	5	5	6	7	7	9	269,115	262,312	605,937	36,719	38,396	66,280	38,033	40,981	41,665
Mayes County	2	2	1	38	34	30	1,323,194	1,250,404	1,157,769	35,048	36,543	38,183	30,956	33,198	35,648
McClain County	48	43	43	318	249	277	20,173,155	16,165,340	19,618,808	63,504	64,843	70,949	35,588	37,396	37,721
McCurtain County	2	2	2	19	25	32	1,011,415	1,455,756	2,564,515	53,339	58,739	79,637	41,177	43,055	46,129
McIntosh County	8	7	7	91	87	51	4,767,965	4,417,147	3,363,766	52,276	50,654	65,897	47,839	49,319	50,571
Murray County	7	5	5	152	156	163	9,209,185	8,700,357	9,084,224	60,390	55,944	55,581	37,908	40,143	42,074
Muskogee County	6	6	5	34	31	28	2,086,047	1,932,974	1,849,076	60,595	61,818	66,337	44,597	45,875	47,964
Noble County	10	10	10	58	68	67	2,927,480	3,624,363	4,484,755	50,833	53,456	67,098	48,253	47,695	47,984
Nowata County	5	5	8	20	21	23	1,101,663	1,158,196	1,397,690	53,768	56,355	61,693	40,882	43,088	44,689
Okfuskee County	8	10	10	32	30	45	1,863,625	1,313,543	1,996,298	57,679	43,502	44,472	34,331	34,736	36,312
Oklahoma County	841	774	720	8,532	6,892	7,317	1,303,077,392	1,048,933,917	1,402,887,644	152,725	152,197	191,727	54,461	56,936	57,964
Okmulgee County	21	19	19	46	43	51	1,165,078	1,283,912	1,961,073	25,288	29,595	38,528	41,669	41,137	43,373
Osage County	42	42	41	265	282	277	11,660,656	12,974,441	12,889,837	43,930	45,948	46,527	40,224	42,122	44,351
Ottawa County	5	4	1	35	19	5	2,226,763	1,174,118	522,292	62,938	62,452	112,270	36,061	38,877	40,725
Pawnee County	20	19	14	113	105	108	5,088,062	4,802,576	5,245,982	44,978	45,898	48,722	39,736	40,189	41,610
Payne County	64	59	60	380	328	376	22,396,790	22,537,423	24,536,373	58,899	68,764	65,210	43,799	45,137	46,802
Pittsburg County	32	25	28	426	251	272	33,897,386	20,324,946	22,221,334	79,504	80,865	81,558	44,258	45,131	48,091
Pontotoc County	40	38	41	269	286	299	15,017,383	15,614,579	17,560,942	55,867	54,559	58,762	46,856	48,993	50,471
Pottawatomie County	30	29	29	142	147	246	8,458,343	8,349,461	16,070,988	59,559	56,931	65,365	38,974	40,791	42,376
Pushmataha County	7	8	6	31	32	23	1,070,352	1,294,244	1,116,174	34,515	40,730	47,829	35,826	41,217	40,127
Roger Mills County	10	9	7	28	25	17	1,595,224	926,058	586,246	56,615	37,441	34,623	40,115	44,101	45,547
Rogers County	8	8	10	163	97	84	11,091,876	6,972,571	6,368,402	68,145	72,144	75,587	48,052	50,181	52,786
Seminole County	42	39	38	307	290	330	18,415,609	18,836,857	22,848,659	59,933	64,887	69,222	38,641	40,146	42,355
Sequoyah County	7	8	8	61	69	74	3,428,225	3,732,981	4,574,445	56,297	54,164	61,692	31,833	32,787	34,173
Stephens County	81	80	76	509	620	734	34,547,332	51,879,760	56,917,433	67,809	83,722	77,512	44,067	44,201	45,560
Texas County	15	18	17	92	112	119	8,415,257	10,199,876	12,977,815	91,707	91,101	109,247	42,845	41,991	48,033
Tillman County	4	3	3	13	12	11	632,712	568,708	541,610	46,888	47,804	49,942	36,672	37,238	38,621
Tulsa County	334	321	302	4,265	3,513	2,724	554,516,592	515,705,599	344,867,141	130,011	146,817	126,581	53,573	55,443	57,217
Wagoner County	2	2	4	6	4	14	250,746	195,391	854,821	44,113	49,408	60,202	44,743	45,549	49,364
Washington County	41	39	37	2,860	2,867	2,713	366,796,180	366,338,176	366,348,613	128,254	127,786	135,018	41,278	42,571	43,574
Washita County	21	22	21	103	83	89	4,979,386	4,404,054	4,311,696	48,436	52,757	48,284	38,614	38,200	40,542
Woods County	18	17	14	354	310	295	26,599,393	24,072,456	24,532,885	75,246	77,698	83,182	38,426	37,753	37,711
Woodward County	87	74	75	901	746	848	64,376,622	58,388,470	74,359,933	71,483	78,276	87,692	44,640	44,899	45,672
Unclassified	79	93	96	364	309	319	7,264,050	6,751,486	7,743,387	19,956	21,867	24,312	17,353	18,391	19,135

Source: Bureau of Labor Statistics (Quarterly Census of Employment and Wages) and RegionTrack estimates and calculations

\* Data for 2022 is on an annualized basis through the second quarter.